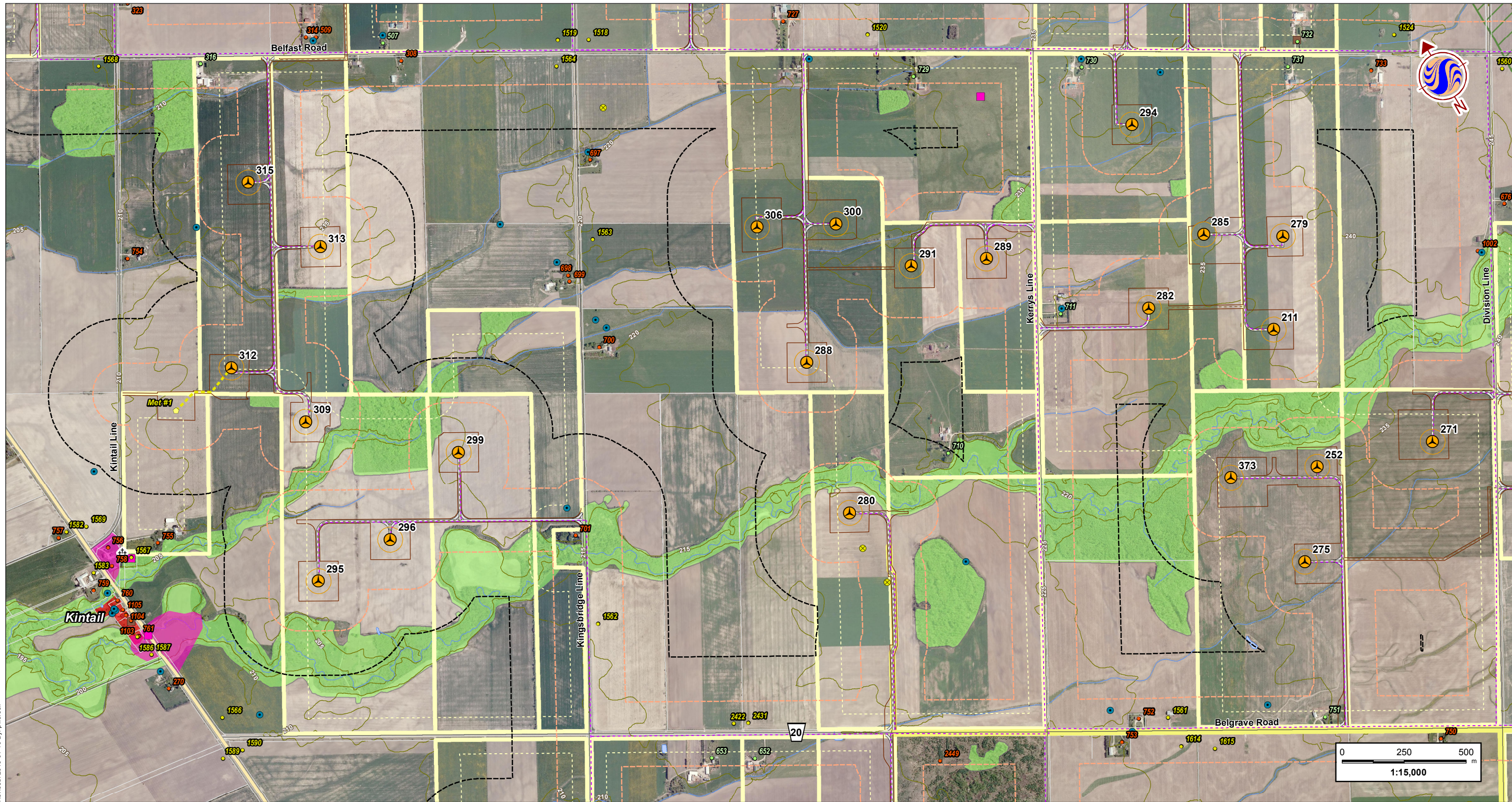


W:\active\6096073\drawing\MXD\APC\Construction\PlanReport\16096073E_Fig2_SocioEconomicFeatures_20130110.mxd
 Revised: 2013-01-10 By: p.worsell



Notes
 1. Coordinate System: NAD 1983 UTM Zone 17N
 2. Base features produced under license with the Ontario Ministry of Natural Resources © Queen's Printer for Ontario, 2013; © Townships of Ashfield-Colborne-Wawanosh, 2013. Project Layout: WFL194.
 3. Orthographic imagery provided by © First Base Solutions, 2013. Imagery taken in Spring 2006.

January 2013
 160960738



Stantec

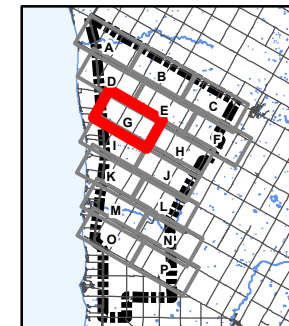
Legend

- 300m Study Area
- 120m Zone of Investigation
- Proposed Project Components**
- Turbine Location
- Turbine Blade Sweep Area
- Met Tower
- Transformer Location
- Access Road
- Access Road (Alternate)
- Buildable Area
- Buildable Area (Alternate)
- Crane Path
- Met Tower Cabling
- Transmission Line
- Transmission Line (Alternate)
- Collector Line System
- Collector Line System (Alternate)
- Substation/Transformer Station Property
- Participating Property
- Property Line/Road Setback
- Existing Features**
- Expressway / Highway
- Road

- Elevation Contour (metres ASL)
- Hydro Line
- Pipeline
- Watercourse
- Waterbody
- Property Boundary
- Existing Turbine Location
- Cemetery
- Landfill - Active
- Landfill - Closed
- Petroleum Well
- Water Well
- Land Use Designations**
- Agriculture
- Extractive
- Lakeshore Residential
- Recreation
- Residential Park
- Village/Hamlet

- Aggregate Resources**
- Aggregate Site - Active
- Aggregate Site - Revoked/Surrendered
- Sterilized Deposit
- Primary Aggregate
- Secondary Aggregate
- Noise Receptors**
- Participating
- Non-Participating
- Vacant Lot

- Cultural Heritage Features**
- Barn
- Church
- Commercial
- House
- Landscape
- School
- Landscape Area



Client/Project
 K2 Wind Ontario Limited Partnership
 K2 Wind Power Project

Figure No.

2-G

Title

Socio-Economic Features