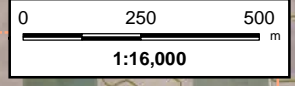
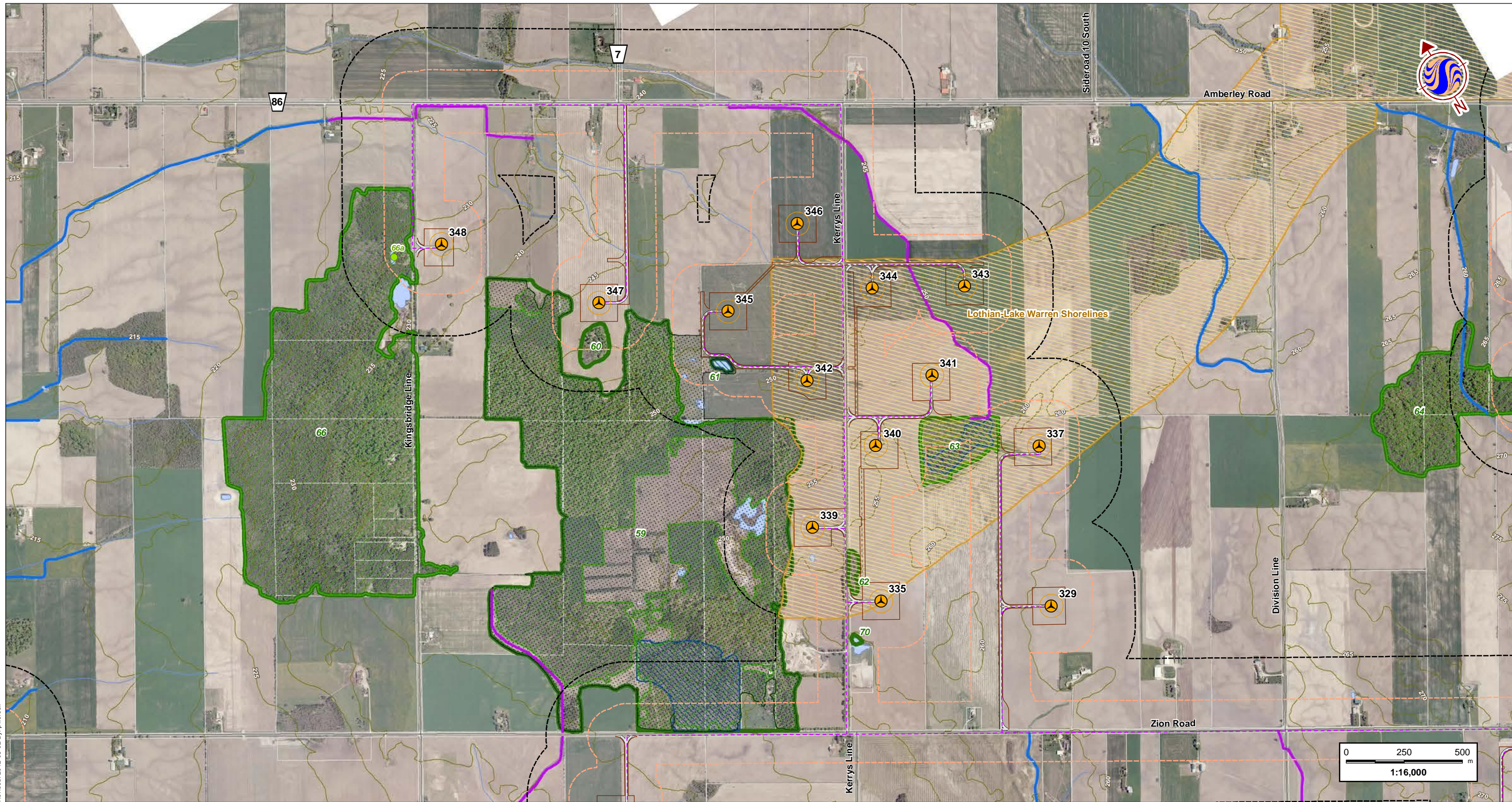


W:\active\60960738\drawing\MXD\A\PC\Construction\PlanReport\160960738_Figs_NaturalHeritageFeatures_Waterbodies_20120802.mxd
 Revised: 2012-08-02 By: p.worsell



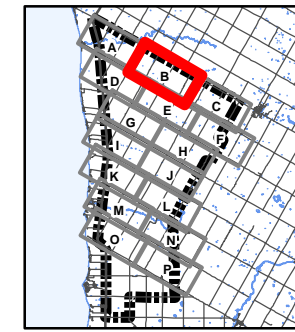
Notes
 1. Coordinate System: NAD 1983 UTM Zone 17N
 2. Base features produced under license with the Ontario Ministry of Natural Resources © Queen's Printer for Ontario, 2012. Project Layout: WFL194.
 3. Orthographic imagery provided by © First Base Solutions, 2012. Imagery taken in Spring 2006.

July 2012
 160960738



Legend

- 300m Study Area
- 120m Zone of Investigation
- Proposed Project Components**
- Turbine Location
- Turbine Blade Sweep Area
- Met Tower
- Transformer Location
- Access Road
- Alternate Access Road
- Buildable Area
- Crane Path
- Met Tower Cabling
- Transmission Line
- Transmission Line (Alternate)
- Collector Line System
- Substation/Transformer Station Property
- Existing Features**
- Expressway / Highway
- Road
- Elevation Contour (metres ASL)
- Hydro Line
- Watercourse
- Waterbody
- Property Boundary
- Existing Turbine Location
- Water Body Classification**
- Permanent
- Intermittent
- Significant Natural Features**
- Significant Amphibian Woodland Breeding Habitat
- Significant Amphibian Corridor
- Natural Feature
- Significant Wetland
- Significant Woodland
- Significant Bat Maternal Colony Roost Habitat
- Significant Colonial Bird Nesting Habitat (Hérons)
- Significant Amphibian Woodland Breeding Habitat
- Significant Habitat for Species of Conservation Concern (Snapping Turtle)
- Significant Valleyland
- Significant Waterfowl Nesting Habitat
- Significant Raptor Feeding & Roosting Habitat
- Significant Turtle Nesting Habitat
- Significant Turtle Over-wintering Habitat
- Provincially Significant Earth Science ANSI
- Provincially Significant Life Science ANSI

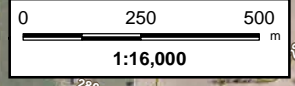
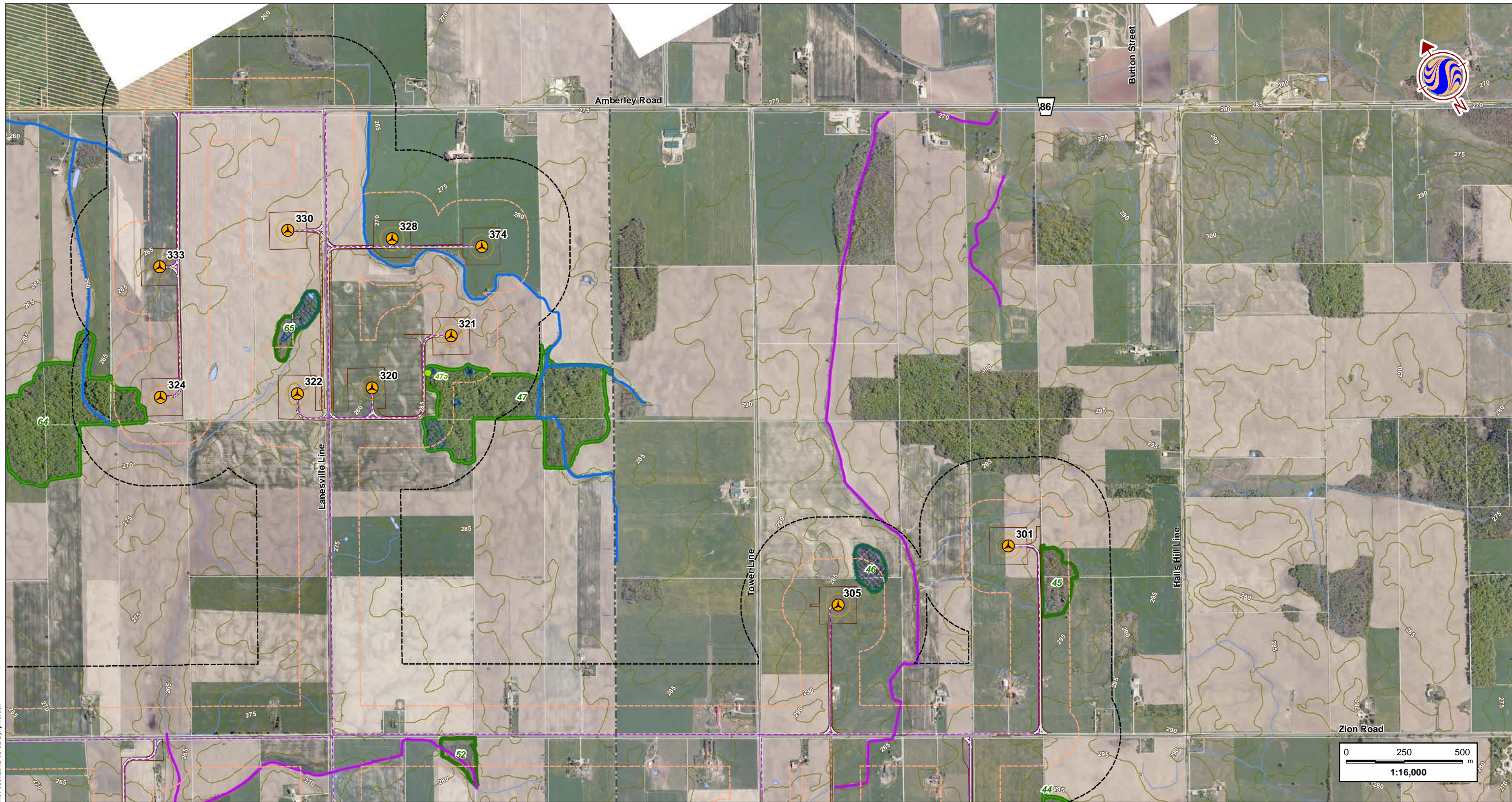


Client/Project
 K2 Wind Ontario Limited Partnership
 K2 Wind Power Project

Figure No.
3-B **DRAFT**

Title
Natural Heritage Features & Water Bodies

W:\active\60960738\drawing\MXD\PC\Construction\PlanReport\160960738_Figs_NaturalHeritageFeatures_Waterbodies_20120602.mxd
 Revised: 2012-08-02 By: p.worsell



Notes
 1. Coordinate System: NAD 1983 UTM Zone 17N
 2. Base features produced under license with the Ontario Ministry of Natural Resources © Queen's Printer for Ontario, 2012. Project Layout: WFL194.
 3. Orthographic imagery provided by © First Base Solutions, 2012. Imagery taken in Spring 2006.

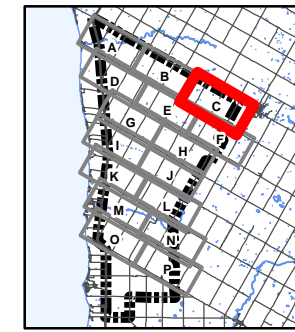
July 2012
 160960738



Stantec

Legend

- 300m Study Area
- 120m Zone of Investigation
- Proposed Project Components**
- Turbine Location
- Turbine Blade Sweep Area
- Met Tower
- + Transformer Location
- Access Road
- Alternate Access Road
- Buildable Area
- Crane Path
- Met Tower Cabling
- Transmission Line
- Transmission Line (Alternate)
- Collector Line System
- Substation/Transformer Station Property
- Existing Features**
- Expressway / Highway
- Road
- Elevation Contour (metres ASL)
- Hydro Line
- Watercourse
- Waterbody
- Property Boundary
- Existing Turbine Location
- Water Body Classification**
- Permanent
- Intermittent
- Significant Natural Features**
- Significant Amphibian Woodland Breeding Habitat
- Significant Amphibian Corridor
- Natural Feature
- Significant Wetland
- Significant Woodland
- Significant Bat Maternal Colony Roost Habitat
- Significant Colonial Bird Nesting Habitat (Hérons)
- Significant Amphibian Woodland Breeding Habitat
- Significant Habitat for Species of Conservation Concern (Snapping Turtle)
- Significant Valleyland
- Significant Waterfowl Nesting Habitat
- Significant Raptor Feeding & Roosting Habitat
- Significant Turtle Nesting Habitat
- Significant Turtle Over-wintering Habitat
- Provincially Significant Earth Science ANSI
- Provincially Significant Life Science ANSI

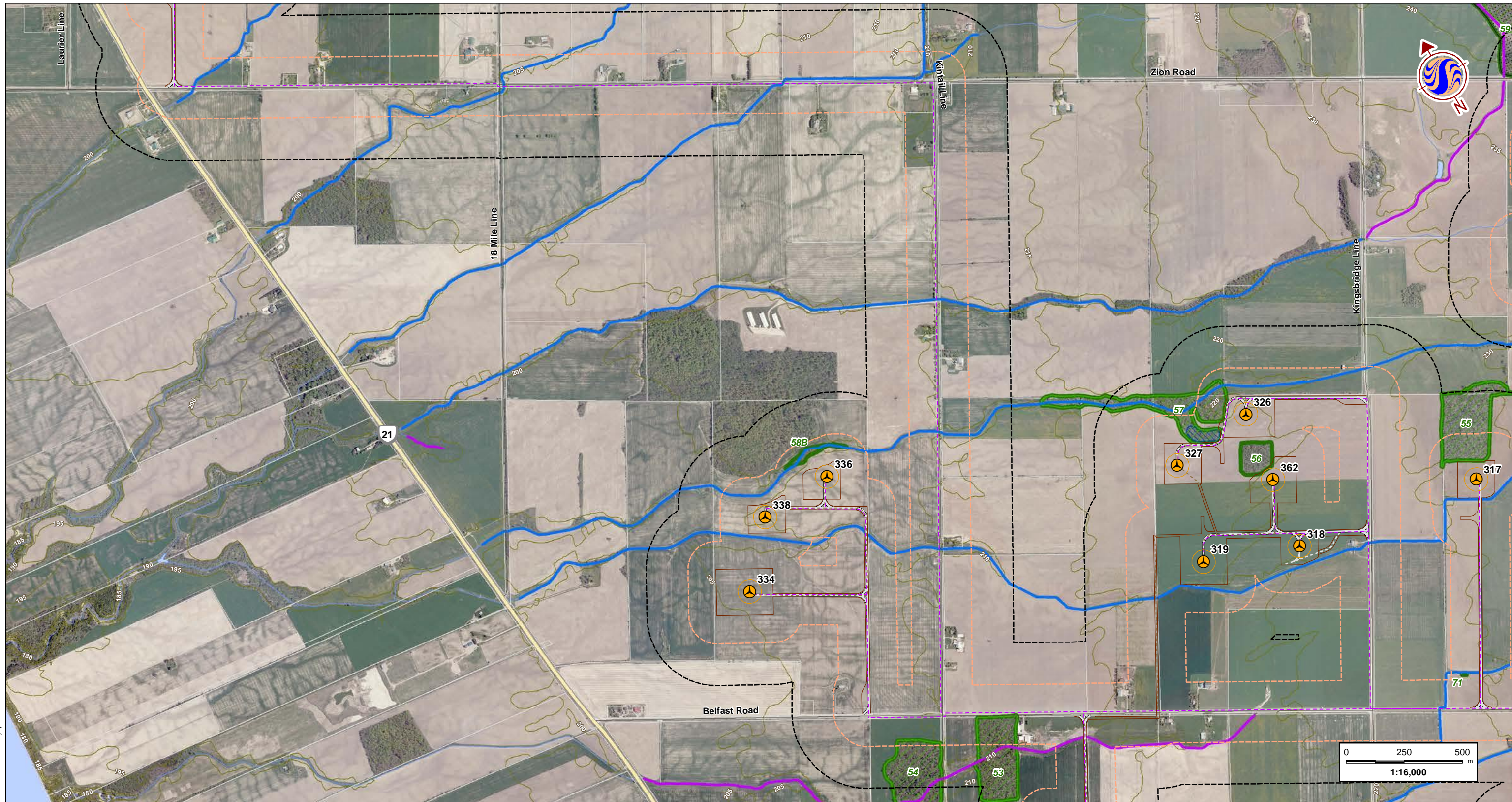


Client/Project
 K2 Wind Ontario Limited Partnership
 K2 Wind Power Project

Figure No.
3-C **DRAFT**

Title
Natural Heritage Features & Water Bodies

W:\active\60960738\drawing\MXD\A\PC\Construction\PlanReport\160960738_Figs_NaturalHeritageFeatures_Waterbodies_20120802.mxd
 Revised: 2012-08-02 By: p.worsell



Notes
 1. Coordinate System: NAD 1983 UTM Zone 17N
 2. Base features produced under license with the Ontario Ministry of Natural Resources © Queen's Printer for Ontario, 2012. Project Layout: WFL194.
 3. Orthographic imagery provided by © First Base Solutions, 2012. Imagery taken in Spring 2006.

July 2012
 160960738



Legend

- 300m Study Area
- 120m Zone of Investigation
- Proposed Project Components**
- Turbine Location
- Turbine Blade Sweep Area
- Met Tower
- Transformer Location
- Access Road
- Alternate Access Road
- Buildable Area
- Crane Path
- Met Tower Cabling
- Transmission Line
- Transmission Line (Alternate)
- Collector Line System
- Substation/Transformer Station Property
- Existing Features**
- Expressway / Highway
- Road
- Elevation Contour (metres ASL)
- Hydro Line
- Watercourse
- Waterbody
- Property Boundary
- Existing Turbine Location
- Water Body Classification**
- Permanent
- Intermittent
- Significant Natural Features**
- Significant Amphibian Woodland Breeding Habitat
- Significant Amphibian Corridor
- Natural Feature
- Significant Wetland
- Significant Woodland

- Significant Bat Maternal Colony Roost Habitat
- Significant Colonial Bird Nesting Habitat (Hérons)
- Significant Amphibian Woodland Breeding Habitat
- Significant Habitat for Species of Conservation Concern (Snapping Turtle)
- Significant Valleyland
- Significant Waterfowl Nesting Habitat
- Significant Raptor Feeding & Roosting Habitat
- Significant Turtle Nesting Habitat
- Significant Turtle Over-wintering Habitat
- Provincially Significant Earth Science ANSI
- Provincially Significant Life Science ANSI

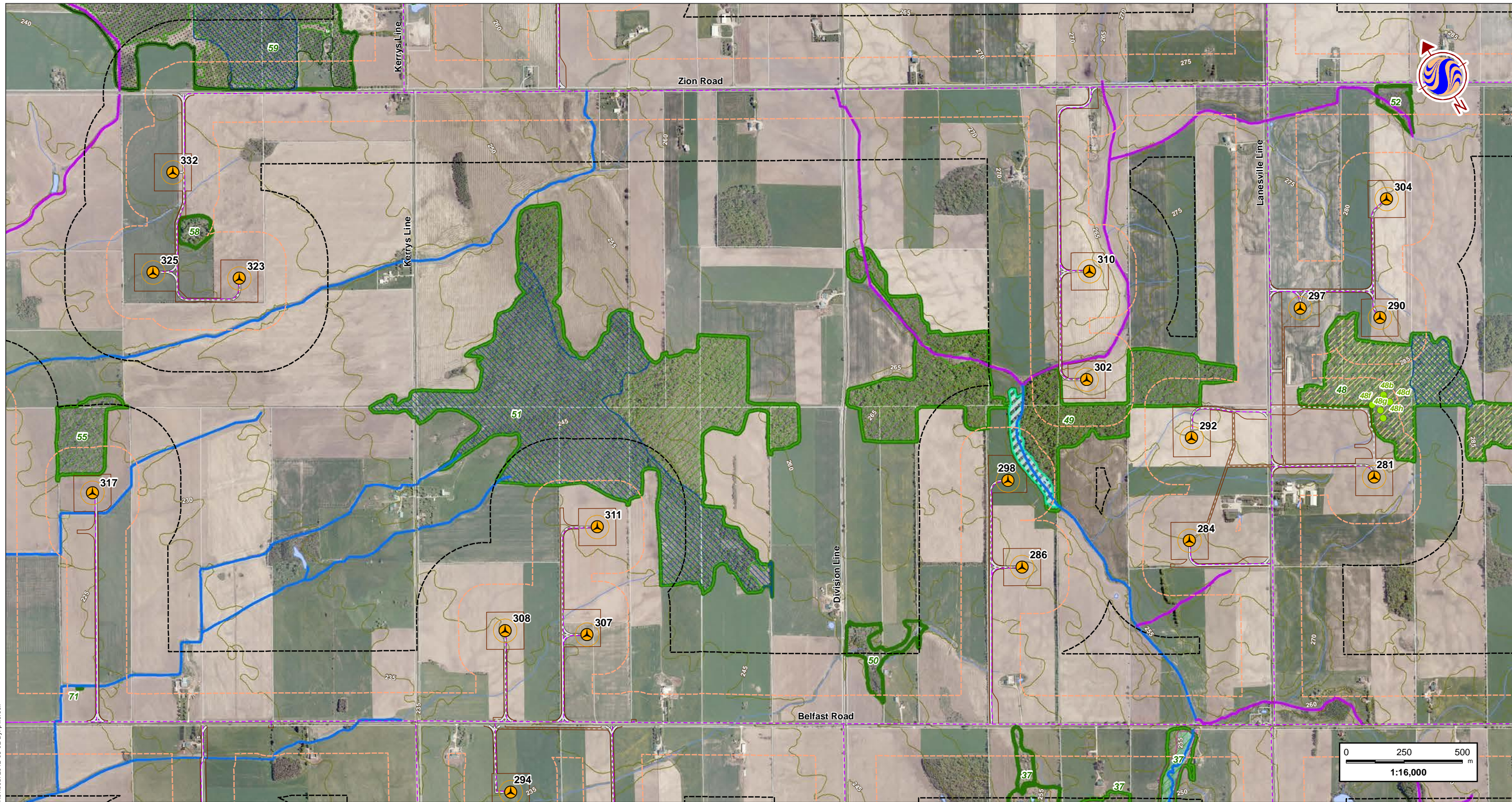


Client/Project
 K2 Wind Ontario Limited Partnership
 K2 Wind Power Project

Figure No.
3-D **DRAFT**

Title
Natural Heritage Features & Water Bodies

W:\active\60960738\drawing\MXD\A\PC\Construction\PlanReport\160960738_Figs_NaturalHeritageFeatures_Waterbodies_20120802.mxd
 Revised: 2012-08-02 By: p.worsell



Notes
 1. Coordinate System: NAD 1983 UTM Zone 17N
 2. Base features produced under license with the Ontario Ministry of Natural Resources © Queen's Printer for Ontario, 2012. Project Layout: WFL194.
 3. Orthographic imagery provided by © First Base Solutions, 2012. Imagery taken in Spring 2006.

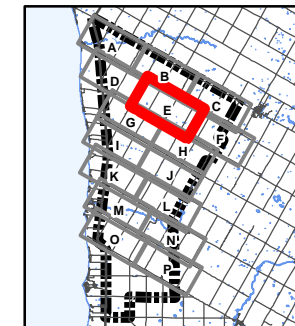
July 2012
 160960738



Legend

- 300m Study Area
- 120m Zone of Investigation
- Proposed Project Components**
- Turbine Location
- Turbine Blade Sweep Area
- Met Tower
- Transformer Location
- Access Road
- Alternate Access Road
- Buildable Area
- Crane Path
- Met Tower Cabling
- Transmission Line
- Transmission Line (Alternate)
- Collector Line System
- Substation/Transformer Station Property
- Existing Features**
- Expressway / Highway
- Road
- Elevation Contour (metres ASL)
- Hydro Line
- Watercourse
- Waterbody
- Property Boundary
- Existing Turbine Location
- Water Body Classification**
- Permanent
- Intermittent
- Significant Natural Features**
- Significant Amphibian Woodland Breeding Habitat
- Significant Amphibian Corridor
- Natural Feature
- Significant Wetland
- Significant Woodland

- Significant Bat Maternal Colony Roost Habitat
- Significant Colonial Bird Nesting Habitat (Hérons)
- Significant Amphibian Woodland Breeding Habitat
- Significant Habitat for Species of Conservation Concern (Snapping Turtle)
- Significant Valleyland
- Significant Waterfowl Nesting Habitat
- Significant Raptor Feeding & Roosting Habitat
- Significant Turtle Nesting Habitat
- Significant Turtle Over-wintering Habitat
- Provincially Significant Earth Science ANSI
- Provincially Significant Life Science ANSI

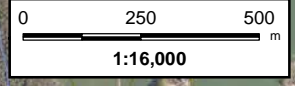
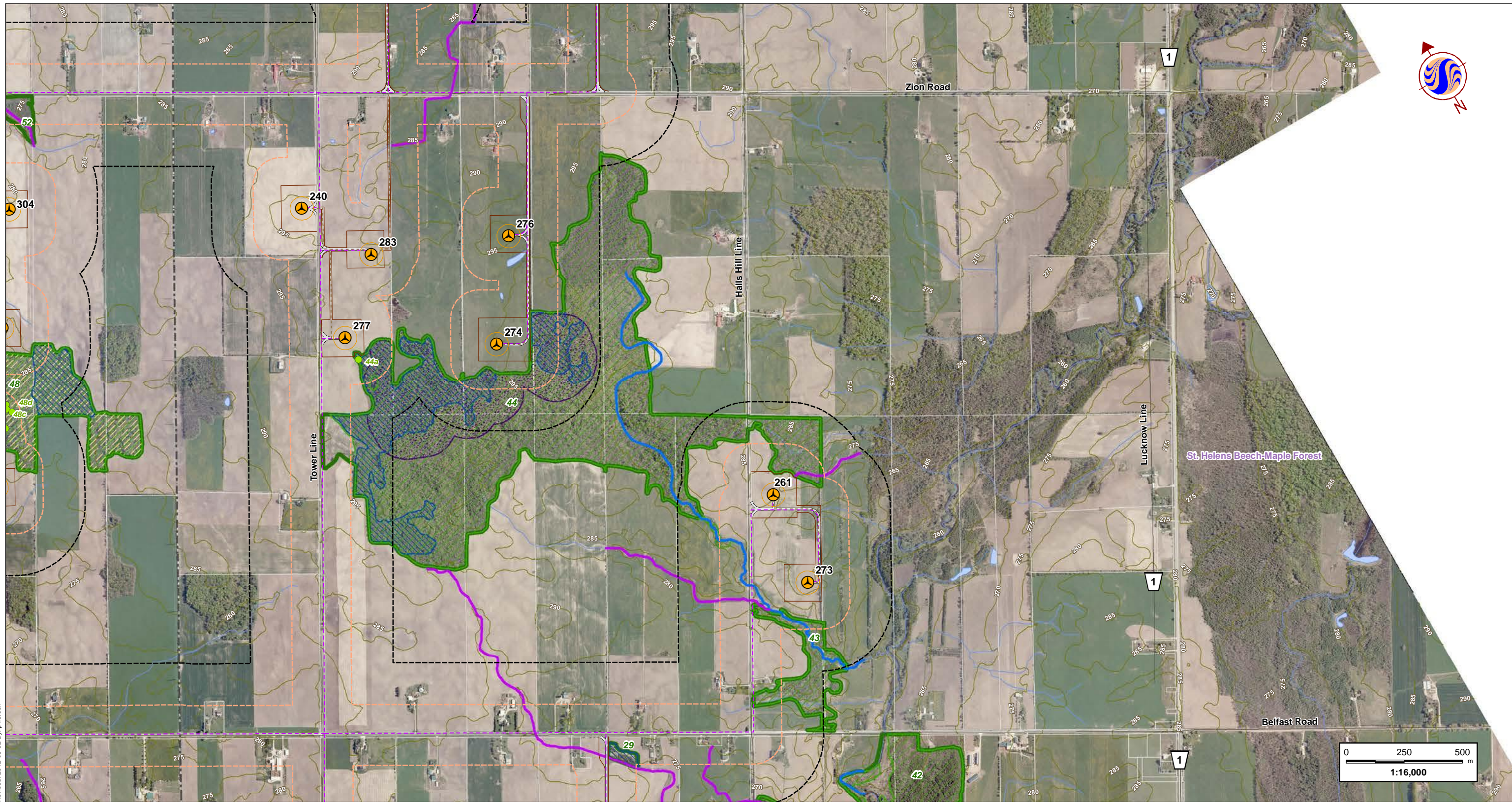


Client/Project
 K2 Wind Ontario Limited Partnership
 K2 Wind Power Project

Figure No.
3-E **DRAFT**

Title
Natural Heritage Features & Water Bodies

W:\active\60960738\drawing\MXD\PC\ConstructionPlanReport\160960738_Figs_NaturalHeritageFeatures_Waterbodies_20120802.mxd
 Revised: 2012-08-02 By: p.worsell



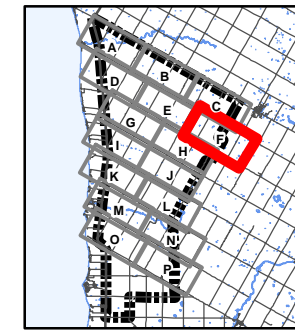
Notes
 1. Coordinate System: NAD 1983 UTM Zone 17N
 2. Base features produced under license with the Ontario Ministry of Natural Resources © Queen's Printer for Ontario, 2012. Project Layout: WFL194.
 3. Orthographic imagery provided by © First Base Solutions, 2012. Imagery taken in Spring 2006.

July 2012
 160960738



Legend

- 300m Study Area
- 120m Zone of Investigation
- Proposed Project Components**
- Turbine Location
- Turbine Blade Sweep Area
- Met Tower
- + Transformer Location
- Access Road
- Alternate Access Road
- Buildable Area
- Crane Path
- Met Tower Cabling
- Transmission Line
- Transmission Line (Alternate)
- Collector Line System
- Substation/Transformer Station Property
- Existing Features**
- Expressway / Highway
- Road
- Elevation Contour (metres ASL)
- Hydro Line
- Watercourse
- Waterbody
- Property Boundary
- Existing Turbine Location
- Water Body Classification**
- Permanent
- Intermittent
- Significant Natural Features**
- Significant Amphibian Woodland Breeding Habitat
- Significant Amphibian Corridor
- Natural Feature
- Significant Wetland
- Significant Woodland
- Significant Bat Maternal Colony Roost Habitat
- Significant Colonial Bird Nesting Habitat (Hérons)
- Significant Amphibian Woodland Breeding Habitat
- Significant Habitat for Species of Conservation Concern (Snapping Turtle)
- Significant Valleyland
- Significant Waterfowl Nesting Habitat
- Significant Raptor Feeding & Roosting Habitat
- Significant Turtle Nesting Habitat
- Significant Turtle Over-wintering Habitat
- Provincially Significant Earth Science ANSI
- Provincially Significant Life Science ANSI

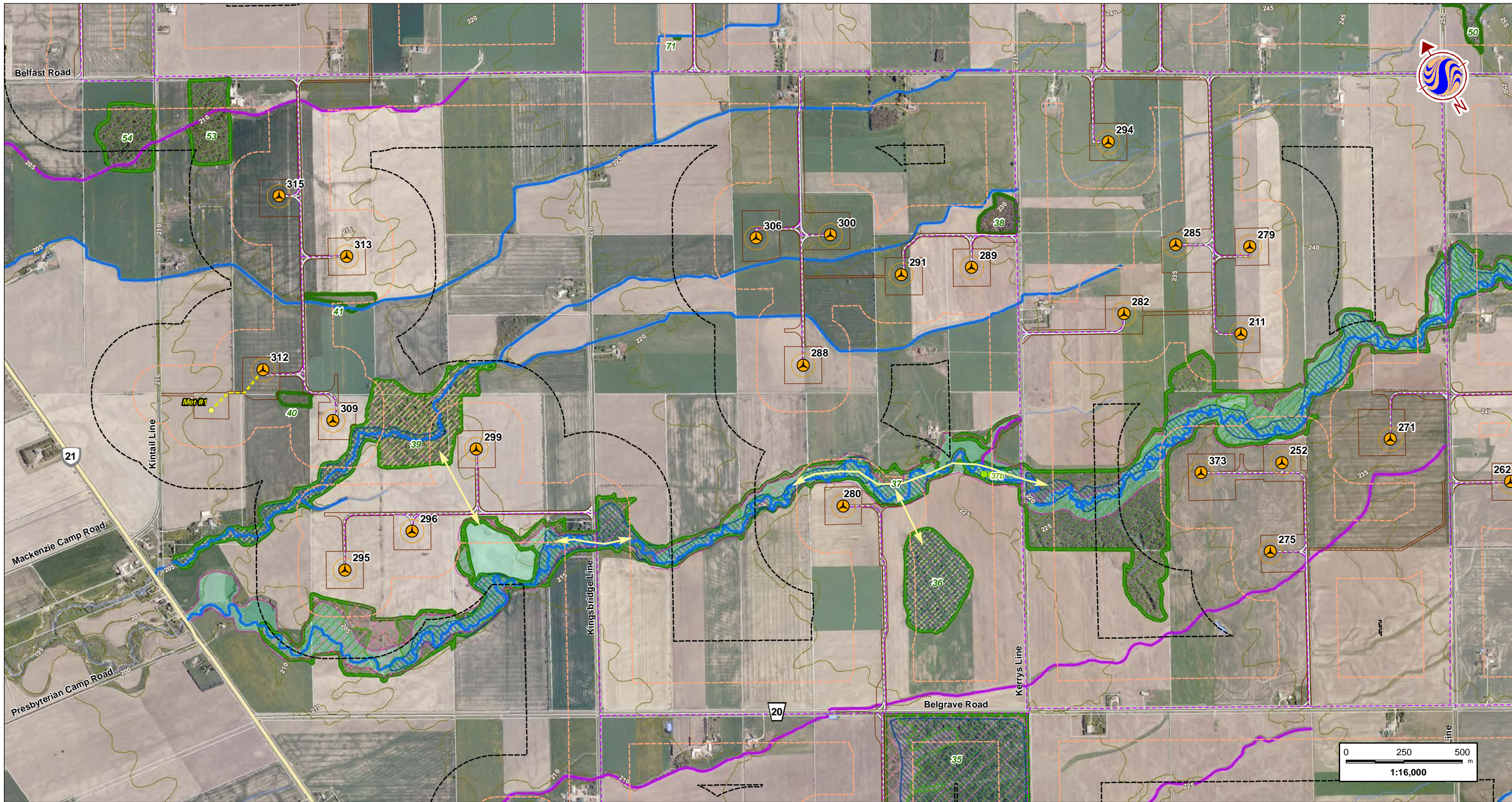


Client/Project
 K2 Wind Ontario Limited Partnership
 K2 Wind Power Project

Figure No.
3-F **DRAFT**

Title
Natural Heritage Features & Water Bodies

W:\active\60960738\drawing\MXD\A\PC\Construction\PlanReport\160960738_Figs_NaturalHeritageFeatures_Waterbodies_20120802.mxd
 Revised: 2012-08-02 By: p.worsell



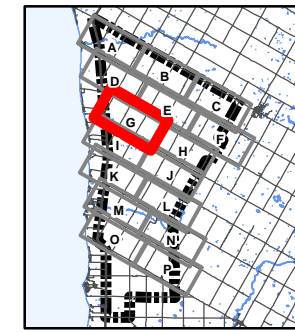
Notes
 1. Coordinate System: NAD 1983 UTM Zone 17N
 2. Base features produced under license with the Ontario Ministry of Natural Resources © Queen's Printer for Ontario, 2012. Project Layout: WFL194.
 3. Orthographic imagery provided by © First Base Solutions, 2012. Imagery taken in Spring 2006.

July 2012
 160960738



Legend

- 300m Study Area
- 120m Zone of Investigation
- Proposed Project Components**
- Turbine Location
- Turbine Blade Sweep Area
- Met Tower
- Transformer Location
- Access Road
- Alternate Access Road
- Buildable Area
- Crane Path
- Met Tower Cabling
- Transmission Line
- Transmission Line (Alternate)
- Collector Line System
- Substation/Transformer Station Property
- Existing Features**
- Expressway / Highway
- Road
- Elevation Contour (metres ASL)
- Hydro Line
- Watercourse
- Waterbody
- Property Boundary
- Existing Turbine Location
- Water Body Classification**
- Permanent
- Intermittent
- Significant Natural Features**
- Significant Amphibian Woodland Breeding Habitat
- Significant Amphibian Corridor
- Natural Feature
- Significant Wetland
- Significant Woodland
- Significant Bat Maternal Colony Roost Habitat
- Significant Colonial Bird Nesting Habitat (Hérons)
- Significant Amphibian Woodland Breeding Habitat
- Significant Habitat for Species of Conservation Concern (Snapping Turtle)
- Significant Valleyland
- Significant Waterfowl Nesting Habitat
- Significant Raptor Feeding & Roosting Habitat
- Significant Turtle Nesting Habitat
- Significant Turtle Over-wintering Habitat
- Provincially Significant Earth Science ANSI
- Provincially Significant Life Science ANSI

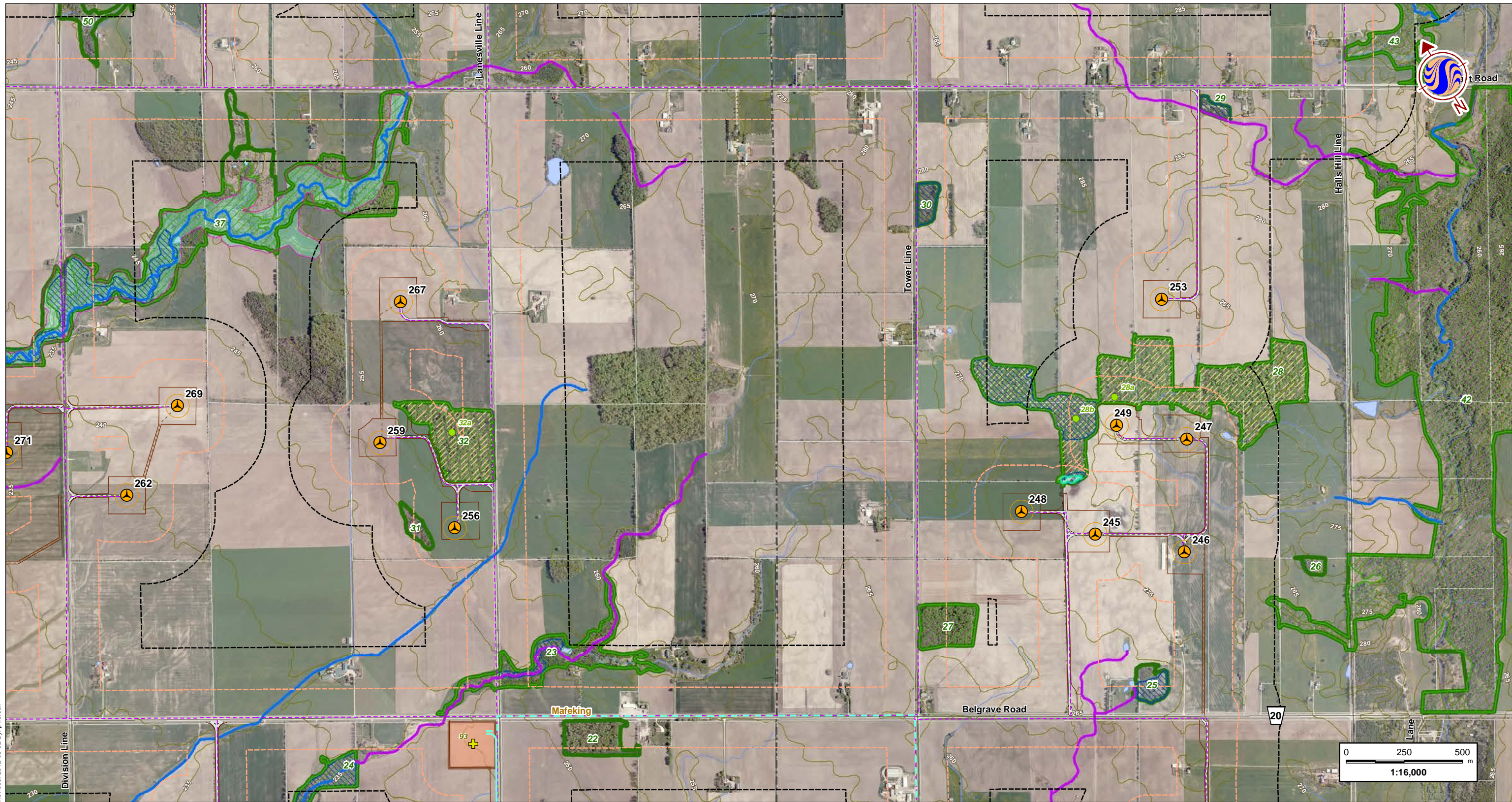


Client/Project
 K2 Wind Ontario Limited Partnership
 K2 Wind Power Project

Figure No.
3-G **DRAFT**

Title
Natural Heritage Features & Water Bodies

W:\active\60960738\drawing\MXD\A\PC\Construction\PlanReport\160960738_Figs_NaturalHeritageFeatures_Waterbodies_20120802.mxd
 Revised: 2012-08-02 By: p.worsell



Notes
 1. Coordinate System: NAD 1983 UTM Zone 17N
 2. Base features produced under license with the Ontario Ministry of Natural Resources © Queen's Printer for Ontario, 2012. Project Layout: WFL194.
 3. Orthographic imagery provided by © First Base Solutions, 2012. Imagery taken in Spring 2006.

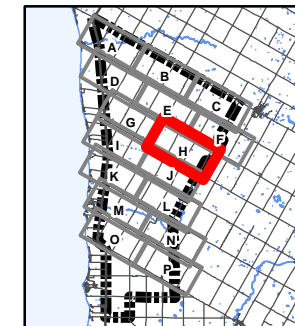
July 2012
 160960738



Legend

- 300m Study Area
- 120m Zone of Investigation
- Proposed Project Components**
- Turbine Location
- Turbine Blade Sweep Area
- Met Tower
- Transformer Location
- Access Road
- Alternate Access Road
- Buildable Area
- Crane Path
- Met Tower Cabling
- Transmission Line
- Transmission Line (Alternate)
- Collector Line System
- Substation/Transformer Station Property
- Existing Features**
- Expressway / Highway
- Road
- Elevation Contour (metres ASL)
- Hydro Line
- Watercourse
- Waterbody
- Property Boundary
- Existing Turbine Location
- Water Body Classification**
- Permanent
- Intermittent
- Significant Natural Features**
- Significant Amphibian Woodland Breeding Habitat
- Significant Amphibian Corridor
- Natural Feature
- Significant Wetland
- Significant Woodland

- Significant Bat Maternal Colony Roost Habitat
- Significant Colonial Bird Nesting Habitat (Hérons)
- Significant Amphibian Woodland Breeding Habitat
- Significant Habitat for Species of Conservation Concern (Snapping Turtle)
- Significant Valleyland
- Significant Waterfowl Nesting Habitat
- Significant Raptor Feeding & Roosting Habitat
- Significant Turtle Nesting Habitat
- Significant Turtle Over-wintering Habitat
- Provincially Significant Earth Science ANSI
- Provincially Significant Life Science ANSI

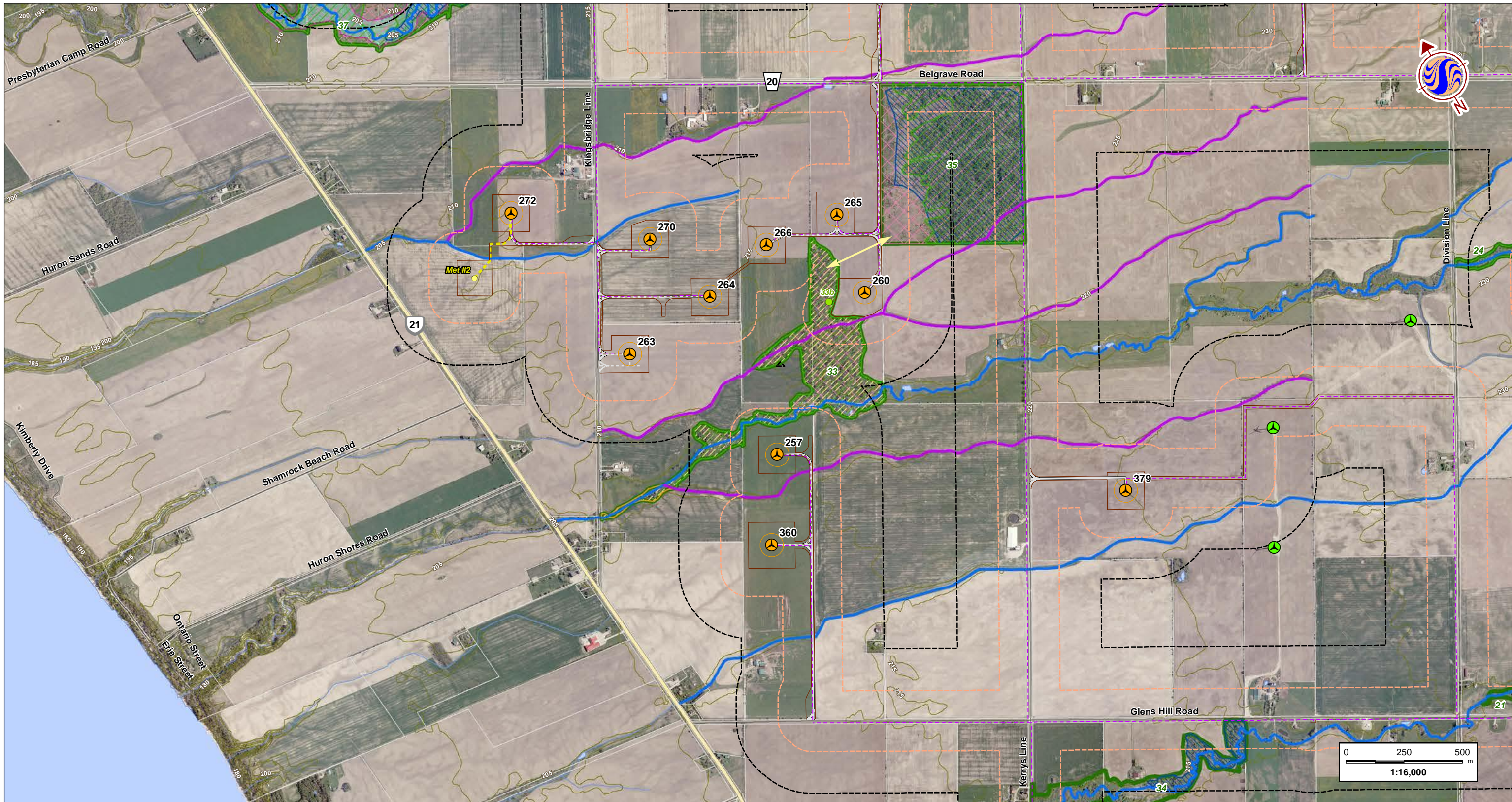


Client/Project
 K2 Wind Ontario Limited Partnership
 K2 Wind Power Project

Figure No.
3-H **DRAFT**

Title
Natural Heritage Features & Water Bodies

W:\active\60960738\drawing\MXD\A\PC\Construction\PlanReport\160960738_Figs_NaturalHeritageFeatures_Waterbodies_20120802.mxd
 Revised: 2012-08-02 By: p.worsell



Notes
 1. Coordinate System: NAD 1983 UTM Zone 17N
 2. Base features produced under license with the Ontario Ministry of Natural Resources © Queen's Printer for Ontario, 2012. Project Layout: WFL194.
 3. Orthographic imagery provided by © First Base Solutions, 2012. Imagery taken in Spring 2006.

July 2012
 160960738



Legend

- 300m Study Area
- 120m Zone of Investigation
- Proposed Project Components**
- Turbine Location
- Turbine Blade Sweep Area
- Met Tower
- + Transformer Location
- Access Road
- Alternate Access Road
- Buildable Area
- Crane Path
- Met Tower Cabling
- Transmission Line
- Transmission Line (Alternate)
- Collector Line System
- Substation/Transformer Station Property
- Existing Features**
- Expressway / Highway
- Road
- Elevation Contour (metres ASL)
- Hydro Line
- Watercourse
- Waterbody
- Property Boundary
- Existing Turbine Location
- Water Body Classification**
- Permanent
- Intermittent
- Significant Natural Features**
- Significant Amphibian Woodland Breeding Habitat
- Significant Amphibian Corridor
- Natural Feature
- Significant Wetland
- Significant Woodland
- Significant Bat Maternal Colony Roost Habitat
- Significant Colonial Bird Nesting Habitat (Hérons)
- Significant Amphibian Woodland Breeding Habitat
- Significant Habitat for Species of Conservation Concern (Snapping Turtle)
- Significant Valleyland
- Significant Waterfowl Nesting Habitat
- Significant Raptor Feeding & Roosting Habitat
- Significant Turtle Nesting Habitat
- Significant Turtle Over-wintering Habitat
- Provincially Significant Earth Science ANSI
- Provincially Significant Life Science ANSI

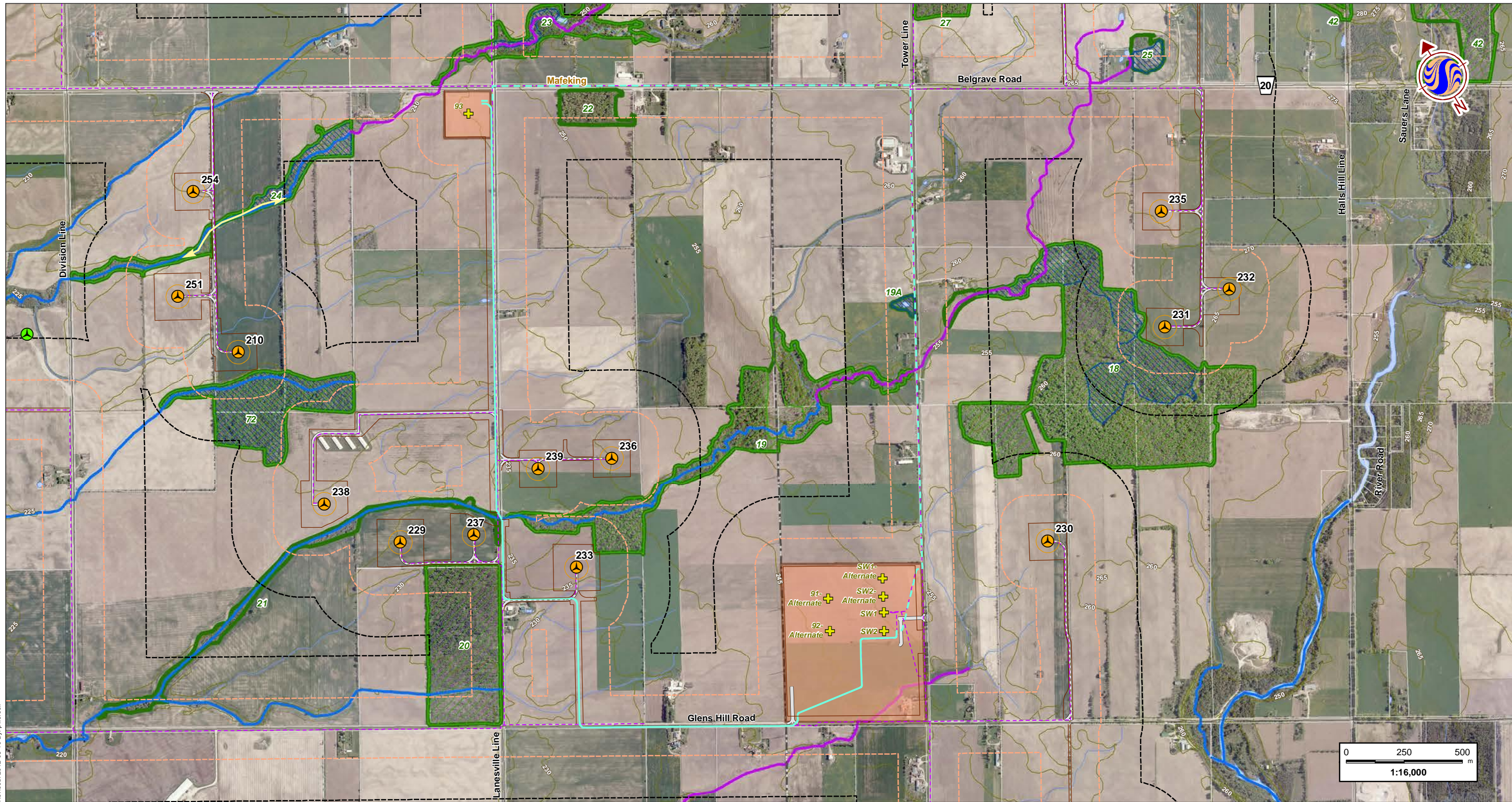


Client/Project
 K2 Wind Ontario Limited Partnership
 K2 Wind Power Project

Figure No.
3-1 **DRAFT**

Title
Natural Heritage Features & Water Bodies

W:\active\60960738\drawing\MXD\A\PC\Construction\PlanReport\160960738_Figs_NaturalHeritageFeatures_Waterbodies_20120802.mxd
 Revised: 2012-08-10 By: p.worsell



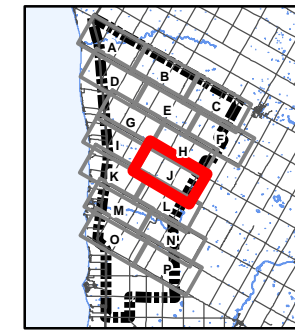
Notes
 1. Coordinate System: NAD 1983 UTM Zone 17N
 2. Base features produced under license with the Ontario Ministry of Natural Resources © Queen's Printer for Ontario, 2012. Project Layout: WFL194.
 3. Orthographic imagery provided by © First Base Solutions, 2012. Imagery taken in Spring 2006.

July 2012
 160960738



Legend

- 300m Study Area
- 120m Zone of Investigation
- Proposed Project Components**
- Turbine Location
- Turbine Blade Sweep Area
- Met Tower
- + Transformer Location
- Access Road
- Alternate Access Road
- Buildable Area
- Crane Path
- Met Tower Cabling
- Transmission Line
- Transmission Line (Alternate)
- Collector Line System
- Substation/Transformer Station Property
- Expressway / Highway
- Road
- Elevation Contour (metres ASL)
- Hydro Line
- Watercourse
- Waterbody
- Property Boundary
- Existing Turbine Location
- Water Body Classification**
- Permanent
- Intermittent
- Significant Natural Features**
- Significant Amphibian Woodland Breeding Habitat
- Significant Amphibian Corridor
- Natural Feature
- Significant Wetland
- Significant Woodland
- Significant Bat Maternal Colony Roost Habitat
- Significant Colonial Bird Nesting Habitat (Hérons)
- Significant Amphibian Woodland Breeding Habitat
- Significant Habitat for Species of Conservation Concern (Snapping Turtle)
- Significant Valleyland
- Significant Waterfowl Nesting Habitat
- Significant Raptor Feeding & Roosting Habitat
- Significant Turtle Nesting Habitat
- Significant Turtle Over-wintering Habitat
- Provincially Significant Earth Science ANSI
- Provincially Significant Life Science ANSI

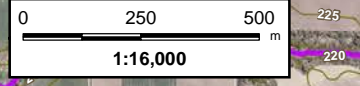
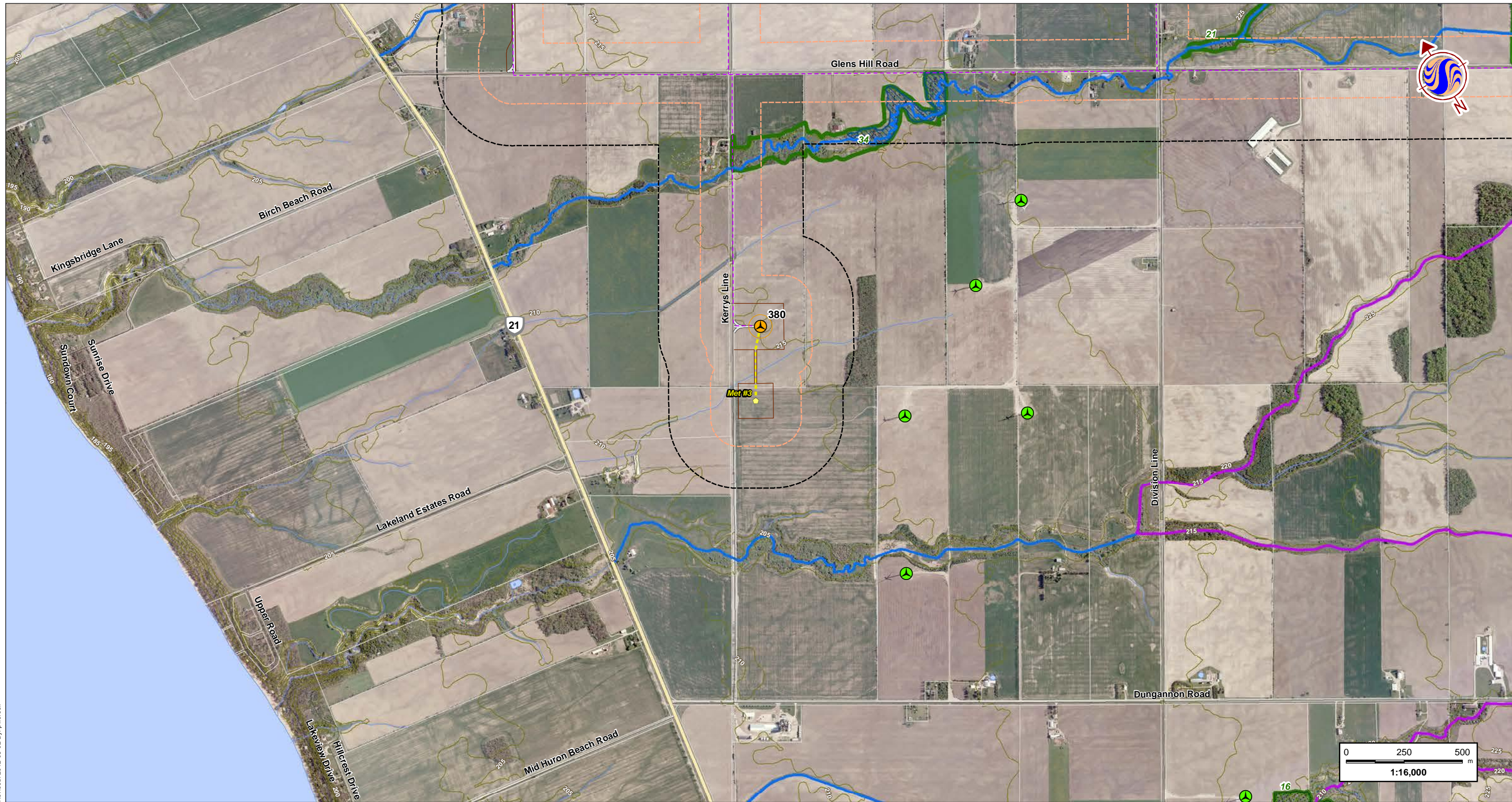


Client/Project
 K2 Wind Ontario Limited Partnership
 K2 Wind Power Project

Figure No.
3-J **DRAFT**

Title
Natural Heritage Features & Water Bodies

W:\active\60960738\drawing\MXD\A\PC\Construction\PlanReport\160960738_Figs_NaturalHeritageFeatures_Waterbodies_20120802.mxd
 Revised: 2012-08-02 By: p.worsell



Notes
 1. Coordinate System: NAD 1983 UTM Zone 17N
 2. Base features produced under license with the Ontario Ministry of Natural Resources © Queen's Printer for Ontario, 2012. Project Layout: WFL194.
 3. Orthographic imagery provided by © First Base Solutions, 2012. Imagery taken in Spring 2006.

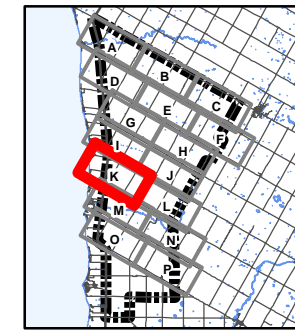
July 2012
 160960738



Legend

- 300m Study Area
- 120m Zone of Investigation
- Proposed Project Components**
- Turbine Location
- Turbine Blade Sweep Area
- Met Tower
- + Transformer Location
- Access Road
- Alternate Access Road
- Buildable Area
- Crane Path
- - - Met Tower Cabling
- Transmission Line
- - - Transmission Line (Alternate)
- - - Collector Line System
- Substation/Transformer Station Property
- Existing Features**
- Expressway / Highway
- Road
- Elevation Contour (metres ASL)
- Hydro Line
- Watercourse
- Waterbody
- Property Boundary
- Existing Turbine Location
- Water Body Classification**
- Permanent
- Intermittent
- Significant Natural Features**
- Significant Amphibian Woodland Breeding Habitat
- Significant Amphibian Corridor
- Natural Feature
- Significant Wetland
- Significant Woodland

- Significant Bat Maternal Colony Roost Habitat
- Significant Colonial Bird Nesting Habitat (Herons)
- Significant Amphibian Woodland Breeding Habitat
- Significant Habitat for Species of Conservation Concern (Snapping Turtle)
- Significant Valleyland
- Significant Waterfowl Nesting Habitat
- Significant Raptor Feeding & Roosting Habitat
- Significant Turtle Nesting Habitat
- Significant Turtle Over-wintering Habitat
- Provincially Significant Earth Science ANSI
- Provincially Significant Life Science ANSI

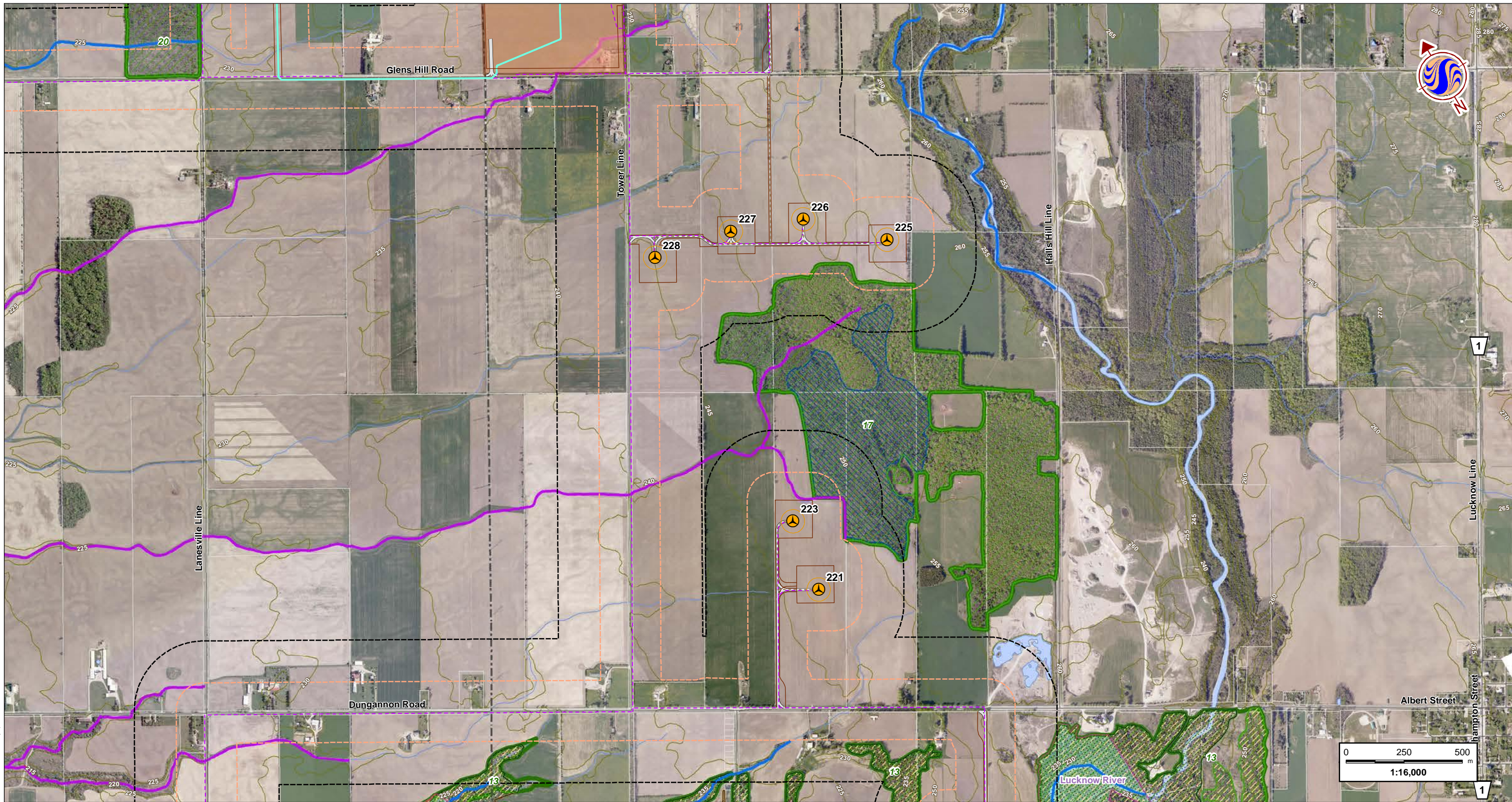


Client/Project
 K2 Wind Ontario Limited Partnership
 K2 Wind Power Project

Figure No.
3-K **DRAFT**

Title
Natural Heritage Features & Water Bodies

W:\active\60960738\drawing\MXD\A\PC\Construction\PlanReport\160960738_Figs_NaturalHeritageFeatures_Waterbodies_20120802.mxd
 Revised: 2012-08-02 By: p.worsell



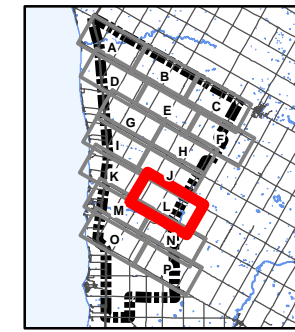
Notes
 1. Coordinate System: NAD 1983 UTM Zone 17N
 2. Base features produced under license with the Ontario Ministry of Natural Resources © Queen's Printer for Ontario, 2012. Project Layout: WFL194.
 3. Orthographic imagery provided by © First Base Solutions, 2012. Imagery taken in Spring 2006.

July 2012
 160960738



Legend

- 300m Study Area
- 120m Zone of Investigation
- Proposed Project Components**
- Turbine Location
- Turbine Blade Sweep Area
- Met Tower
- + Transformer Location
- Access Road
- Alternate Access Road
- Buildable Area
- Crane Path
- Met Tower Cabling
- Transmission Line
- Transmission Line (Alternate)
- Collector Line System
- Substation/Transformer Station Property
- Existing Features**
- Expressway / Highway
- Road
- Elevation Contour (metres ASL)
- Hydro Line
- Watercourse
- Waterbody
- Property Boundary
- Existing Turbine Location
- Water Body Classification**
- Permanent
- Intermittent
- Significant Natural Features**
- Significant Amphibian Woodland Breeding Habitat
- Significant Amphibian Corridor
- Natural Feature
- Significant Wetland
- Significant Woodland
- Significant Bat Maternal Colony Roost Habitat
- Significant Colonial Bird Nesting Habitat (Hérons)
- Significant Amphibian Woodland Breeding Habitat
- Significant Habitat for Species of Conservation Concern (Snapping Turtle)
- Significant Valleyland
- Significant Waterfowl Nesting Habitat
- Significant Raptor Feeding & Roosting Habitat
- Significant Turtle Nesting Habitat
- Significant Turtle Over-wintering Habitat
- Provincially Significant Earth Science ANSI
- Provincially Significant Life Science ANSI

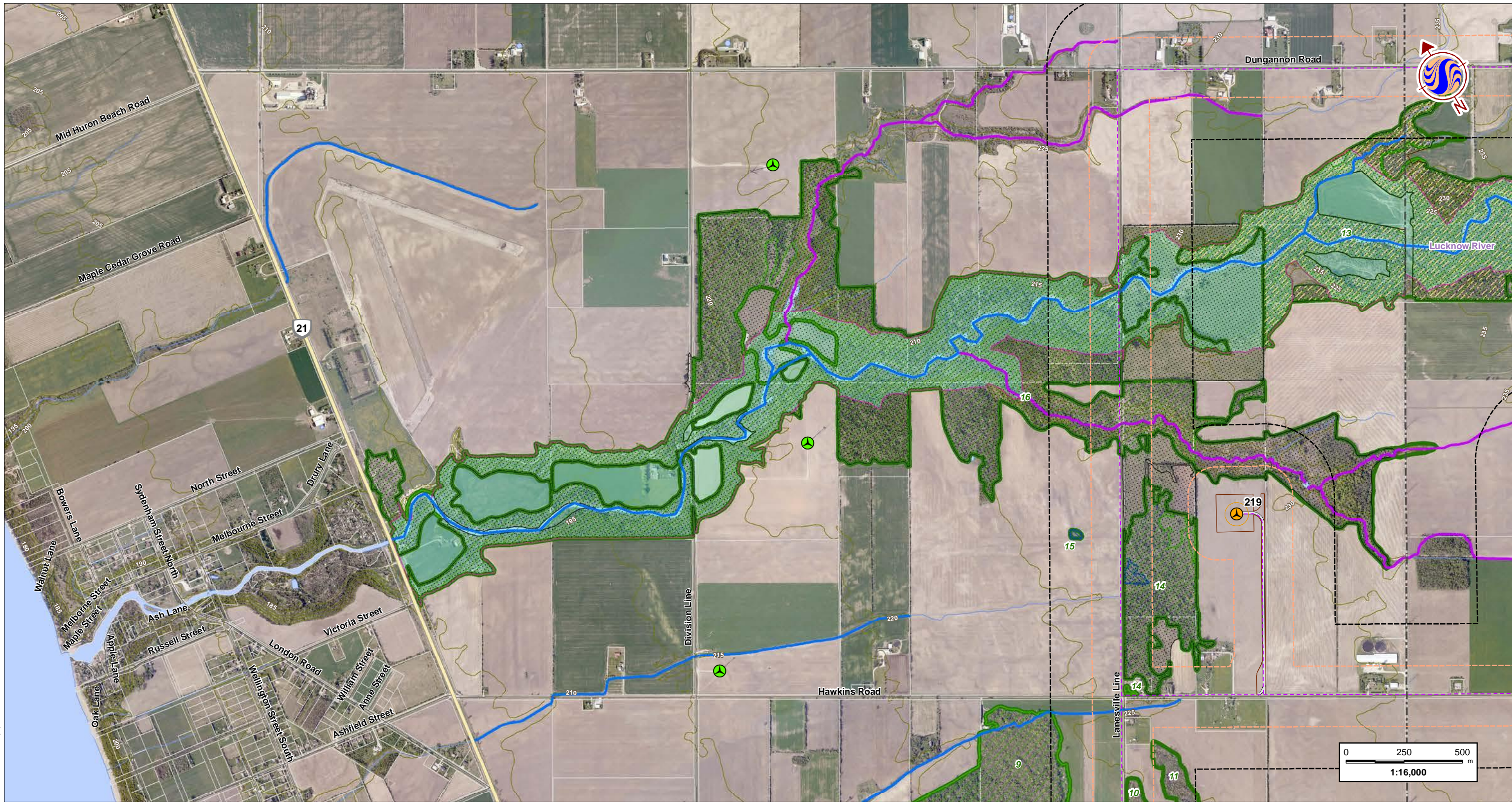


Client/Project
 K2 Wind Ontario Limited Partnership
 K2 Wind Power Project

Figure No.
3-L **DRAFT**

Title
Natural Heritage Features & Water Bodies

W:\active\60960738\drawing\MXD\A\PC\Construction\PlanReport\160960738_Figs_NaturalHeritageFeatures_Waterbodies_20120802.mxd
 Revised: 2012-08-02 By: p.worsell



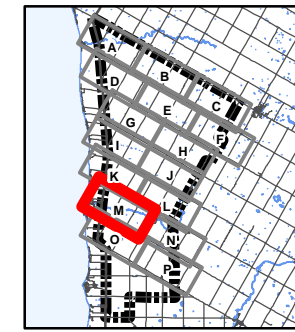
Notes
 1. Coordinate System: NAD 1983 UTM Zone 17N
 2. Base features produced under license with the Ontario Ministry of Natural Resources © Queen's Printer for Ontario, 2012. Project Layout: WFL194.
 3. Orthographic imagery provided by © First Base Solutions, 2012. Imagery taken in Spring 2006.

July 2012
 160960738



Legend

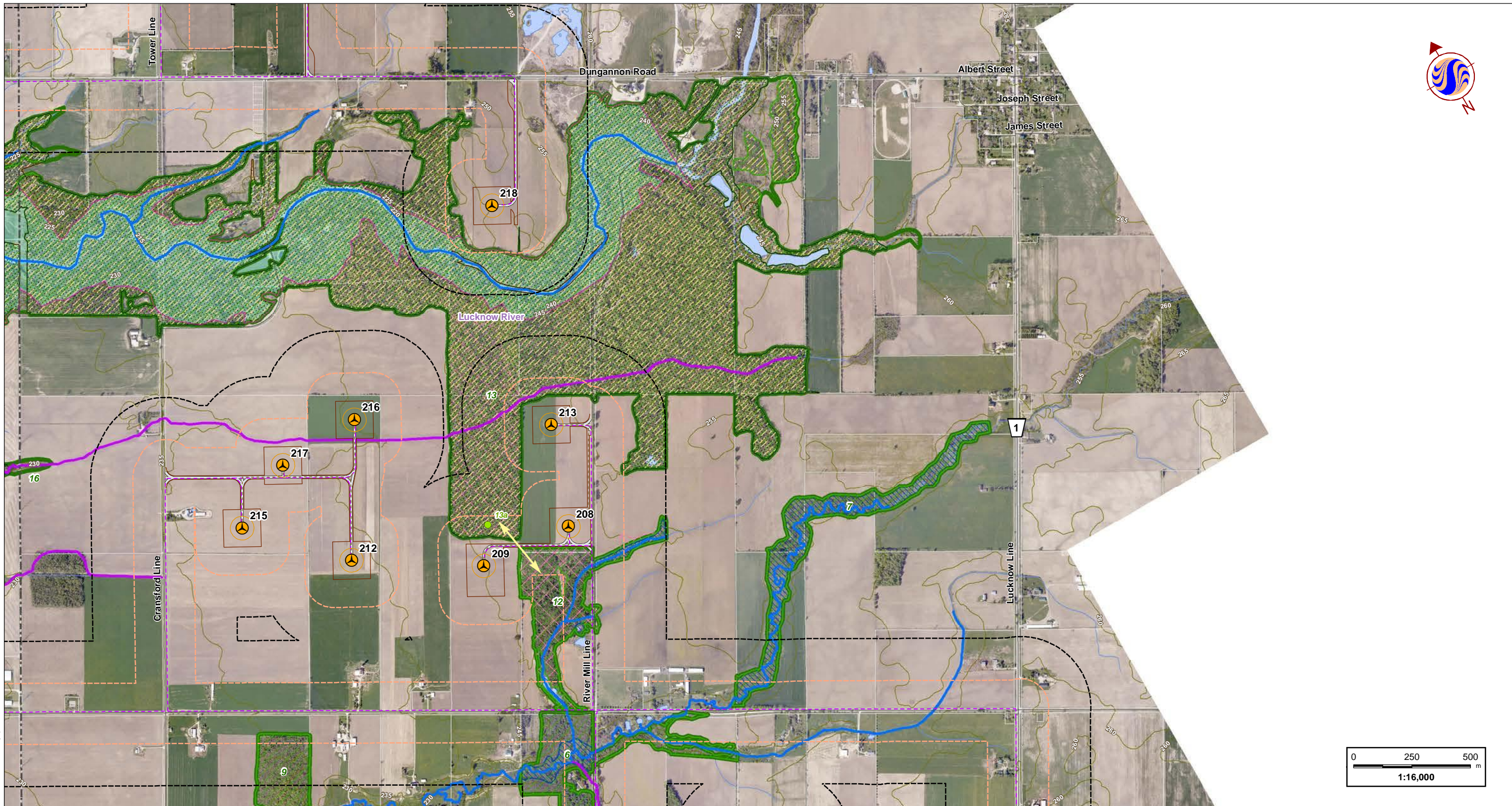
- 300m Study Area
- 120m Zone of Investigation
- Proposed Project Components**
- Turbine Location
- Turbine Blade Sweep Area
- Met Tower
- + Transformer Location
- Access Road
- Alternate Access Road
- Buildable Area
- Crane Path
- Met Tower Cabling
- Transmission Line
- Transmission Line (Alternate)
- Collector Line System
- Substation/Transformer Station Property
- Existing Features**
- Expressway / Highway
- Road
- Elevation Contour (metres ASL)
- Hydro Line
- Watercourse
- Waterbody
- Property Boundary
- Existing Turbine Location
- Water Body Classification**
- Permanent
- Intermittent
- Significant Natural Features**
- 1 Significant Amphibian Woodland Breeding Habitat
- Significant Amphibian Corridor
- Natural Feature
- Significant Wetland
- Significant Woodland
- Significant Bat Maternal Colony Roost Habitat
- Significant Colonial Bird Nesting Habitat (Hérons)
- Significant Amphibian Woodland Breeding Habitat
- Significant Habitat for Species of Conservation Concern (Snapping Turtle)
- Significant Valleyland
- Significant Waterfowl Nesting Habitat
- Significant Raptor Feeding & Roosting Habitat
- Significant Turtle Nesting Habitat
- Significant Turtle Over-wintering Habitat
- Provincially Significant Earth Science ANSI
- Provincially Significant Life Science ANSI



Client/Project
 K2 Wind Ontario Limited Partnership
 K2 Wind Power Project

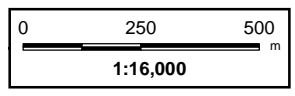
Figure No.
3-M **DRAFT**

Title
Natural Heritage Features & Water Bodies



W:\active\60960738\drawing\MXD\A\PC\Construction\PlanReport\160960738_Figs_NaturalHeritageFeatures_Waterbodies_20120802.mxd
 Revised: 2012-08-02 By: p.worsell

Notes
 1. Coordinate System: NAD 1983 UTM Zone 17N
 2. Base features produced under license with the Ontario Ministry of Natural Resources © Queen's Printer for Ontario, 2012. Project Layout: WFL194.
 3. Orthographic imagery provided by © First Base Solutions, 2012. Imagery taken in Spring 2006.

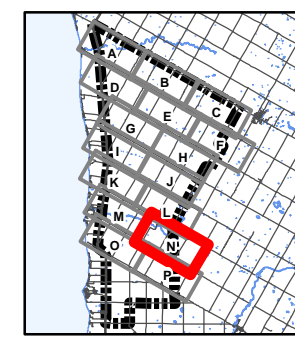


July 2012
160960738

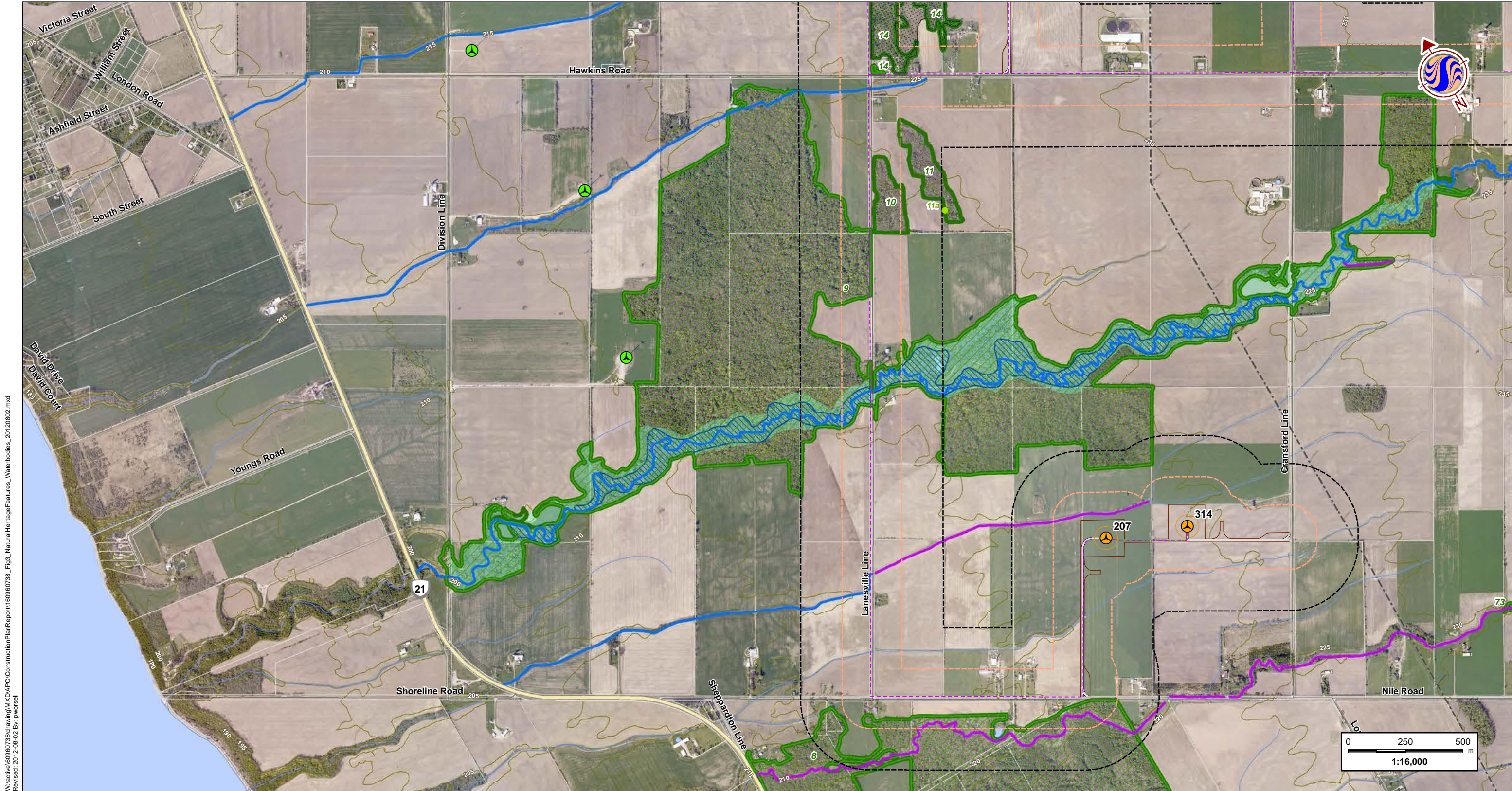


Legend

- | |
|--|
| <ul style="list-style-type: none"> 300m Study Area 120m Zone of Investigation Proposed Project Components ● Turbine Location Turbine Blade Sweep Area ● Met Tower + Transformer Location Access Road Alternate Access Road Buildable Area Crane Path Met Tower Cabling Transmission Line Transmission Line (Alternate) Collector Line System Substation/Transformer Station Property Existing Features Expressway / Highway Road Elevation Contour (metres ASL) Hydro Line Watercourse Waterbody Property Boundary ● Existing Turbine Location Water Body Classification Permanent Intermittent Significant Natural Features 1 Significant Amphibian Woodland Breeding Habitat → Significant Amphibian Corridor Natural Feature Significant Wetland Significant Woodland Significant Bat Maternal Colony Roost Habitat Significant Colonial Bird Nesting Habitat (Hérons) Significant Amphibian Woodland Breeding Habitat Significant Habitat for Species of Conservation Concern (Snapping Turtle) Significant Valleyland Significant Waterfowl Nesting Habitat Significant Raptor Feeding & Roosting Habitat Significant Turtle Nesting Habitat Significant Turtle Over-wintering Habitat Provincially Significant Earth Science ANSI Provincially Significant Life Science ANSI |
|--|



Client/Project
 K2 Wind Ontario Limited Partnership
 K2 Wind Power Project
 Figure No.
3-N **DRAFT**
 Title
Natural Heritage Features & Water Bodies



W:\active\60960738\drawing\MXD\PC\Construction\PlanReport\160960738_Figs_NaturalHeritageFeatures_Waterbodies_20120802.mxd
 Revised: 2012-08-02 By: p.worsell

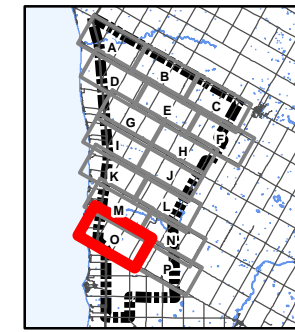
Notes
 1. Coordinate System: NAD 1983 UTM Zone 17N
 2. Base features produced under license with the Ontario Ministry of Natural Resources © Queen's Printer for Ontario, 2012. Project Layout: WFL194.
 3. Orthographic imagery provided by © First Base Solutions, 2012. Imagery taken in Spring 2006.

July 2012
160960738

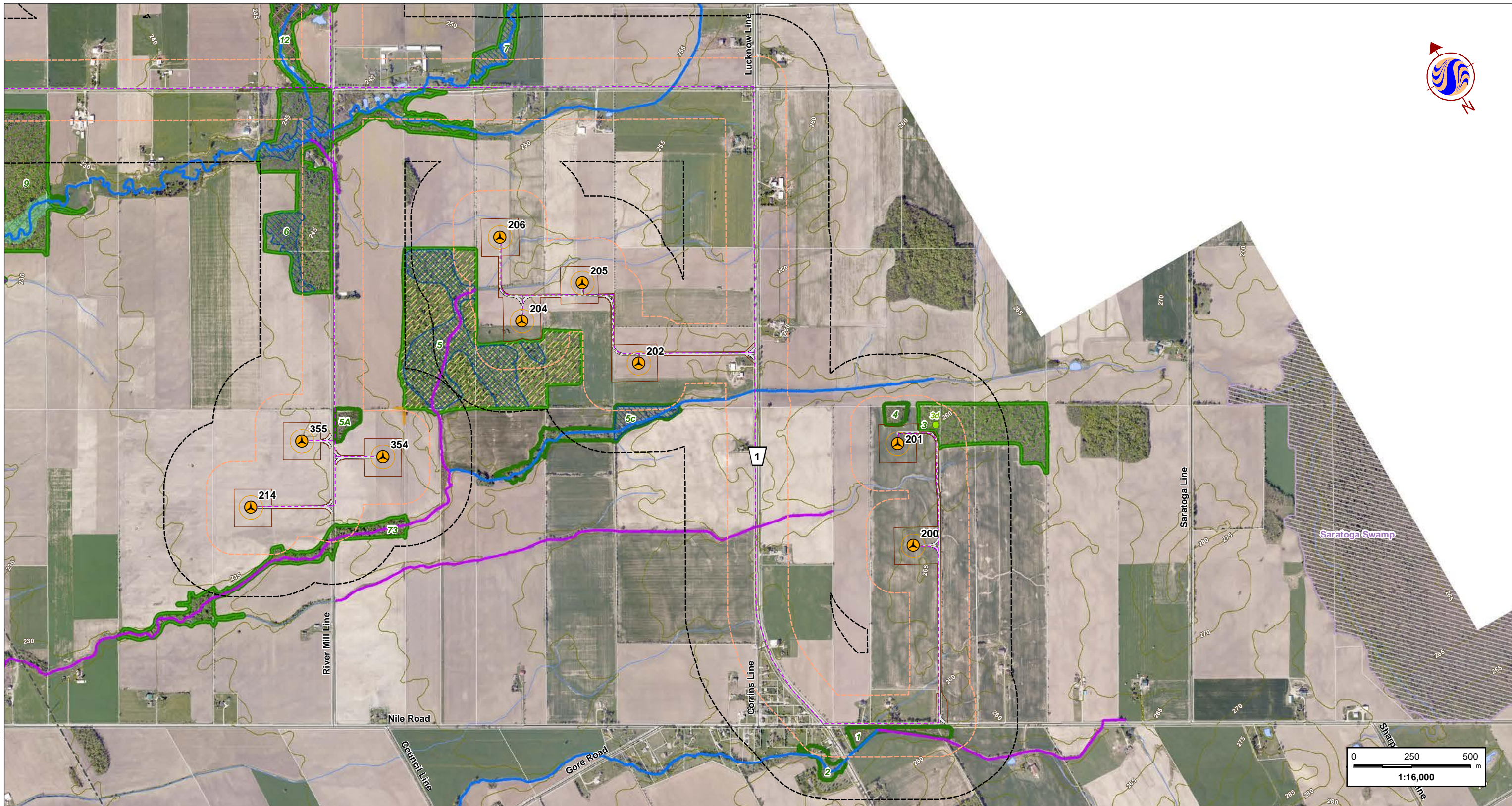


Legend

- | | |
|---|--|
| <ul style="list-style-type: none"> 300m Study Area 120m Zone of Investigation Proposed Project Components ● Turbine Location Turbine Blade Sweep Area ● Met Tower + Transformer Location Access Road Alternate Access Road Buildable Area Crane Path - - - Met Tower Cabling — Transmission Line - - - Transmission Line (Alternate) - - - Collector Line System Substation/Transformer Station Property Existing Features Expressway / Highway Road Elevation Contour (metres ASL) Hydro Line Watercourse Waterbody Property Boundary ● Existing Turbine Location Water Body Classification — Permanent — Intermittent Significant Natural Features 1 Significant Amphibian Woodland Breeding Habitat — Significant Amphibian Corridor Natural Feature Significant Wetland Significant Woodland | <ul style="list-style-type: none"> Significant Bat Maternal Colony Roost Habitat Significant Colonial Bird Nesting Habitat (Herons) Significant Amphibian Woodland Breeding Habitat Significant Habitat for Species of Conservation Concern (Snapping Turtle) Significant Valleyland Significant Waterfowl Nesting Habitat Significant Raptor Feeding & Roosting Habitat Significant Turtle Nesting Habitat Significant Turtle Over-wintering Habitat Provincially Significant Earth Science ANSI Provincially Significant Life Science ANSI |
|---|--|



Client/Project
 K2 Wind Ontario Limited Partnership
 K2 Wind Power Project
 Figure No.
3-0 DRAFT
 Title
Natural Heritage Features & Water Bodies



W:\active\60960738\drawing\MXD\APC\Construction\PlanReport\160960738_Figs_NaturalHeritageFeatures_Waterbodies_20120802.mxd
 Revised: 2012-08-02 By: p.worsell

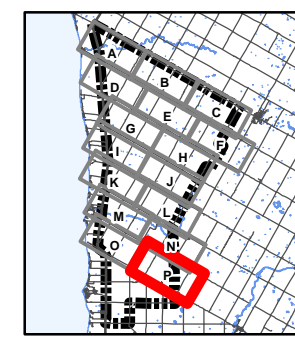
Notes
 1. Coordinate System: NAD 1983 UTM Zone 17N
 2. Base features produced under license with the Ontario Ministry of Natural Resources © Queen's Printer for Ontario, 2012. Project Layout: WFL194.
 3. Orthographic imagery provided by © First Base Solutions, 2012. Imagery taken in Spring 2006.

July 2012
160960738



Legend

- | |
|---|
| <ul style="list-style-type: none"> 300m Study Area 120m Zone of Investigation Proposed Project Components ● Turbine Location Turbine Blade Sweep Area ● Met Tower + Transformer Location Access Road Alternate Access Road Buildable Area Crane Path Met Tower Cabling Transmission Line Transmission Line (Alternate) Collector Line System Substation/Transformer Station Property Existing Features Expressway / Highway Road Elevation Contour (metres ASL) Hydro Line Watercourse Waterbody Property Boundary ● Existing Turbine Location Water Body Classification Permanent Intermittent Significant Natural Features ● Significant Amphibian Woodland Breeding Habitat ● Significant Amphibian Corridor Natural Feature Significant Wetland Significant Woodland Significant Bat Maternal Colony Roost Habitat Significant Colonial Bird Nesting Habitat (Heron) Significant Amphibian Woodland Breeding Habitat Significant Habitat for Species of Conservation Concern (Snapping Turtle) Significant Valleyland Significant Waterfowl Nesting Habitat Significant Raptor Feeding & Roosting Habitat Significant Turtle Nesting Habitat Significant Turtle Over-wintering Habitat Provincially Significant Earth Science ANSI Provincially Significant Life Science ANSI |
|---|



Client/Project
 K2 Wind Ontario Limited Partnership
 K2 Wind Power Project
 Figure No.
3-P **DRAFT**
 Title
Natural Heritage Features & Water Bodies

K2 Wind Power Project



Figure 4: Noise Contours and Receptors

