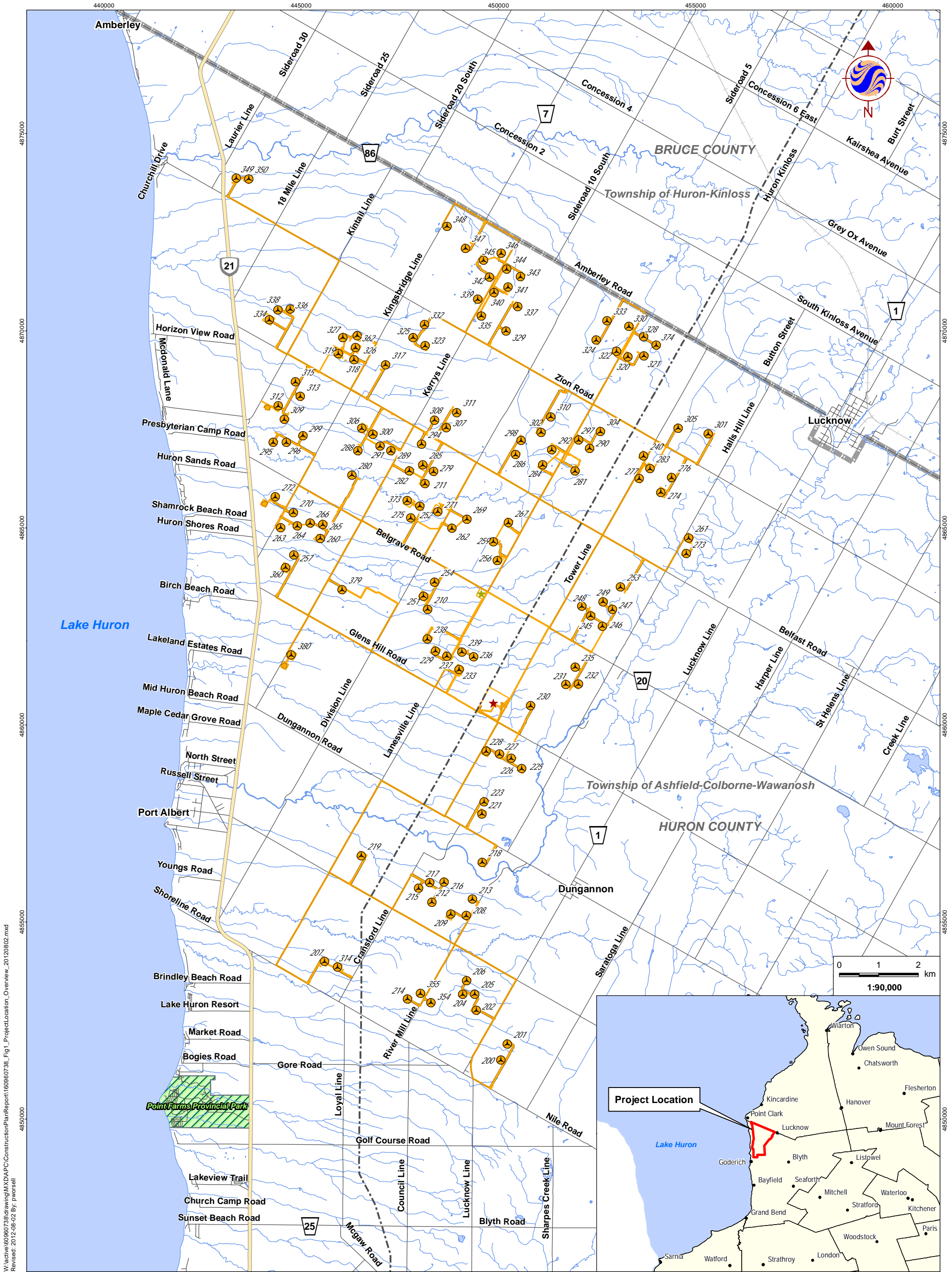




**APPENDIX A:
Figures**



W:\active\160960738\drawing\MXD\FPC\ConstructionPlan\Report\160960738_Fig_1_ProjectLocation_Overview_20120802.mxd
 Revised: 2012-08-02 By: p.worsell

Notes
 1. Coordinate System: NAD 1983 UTM Zone 17N
 2. Base features produced under license with the Ontario Ministry of Natural Resources © Queen's Printer for Ontario, 2012. Project Layout: WFL194.

August 2012
 160960738



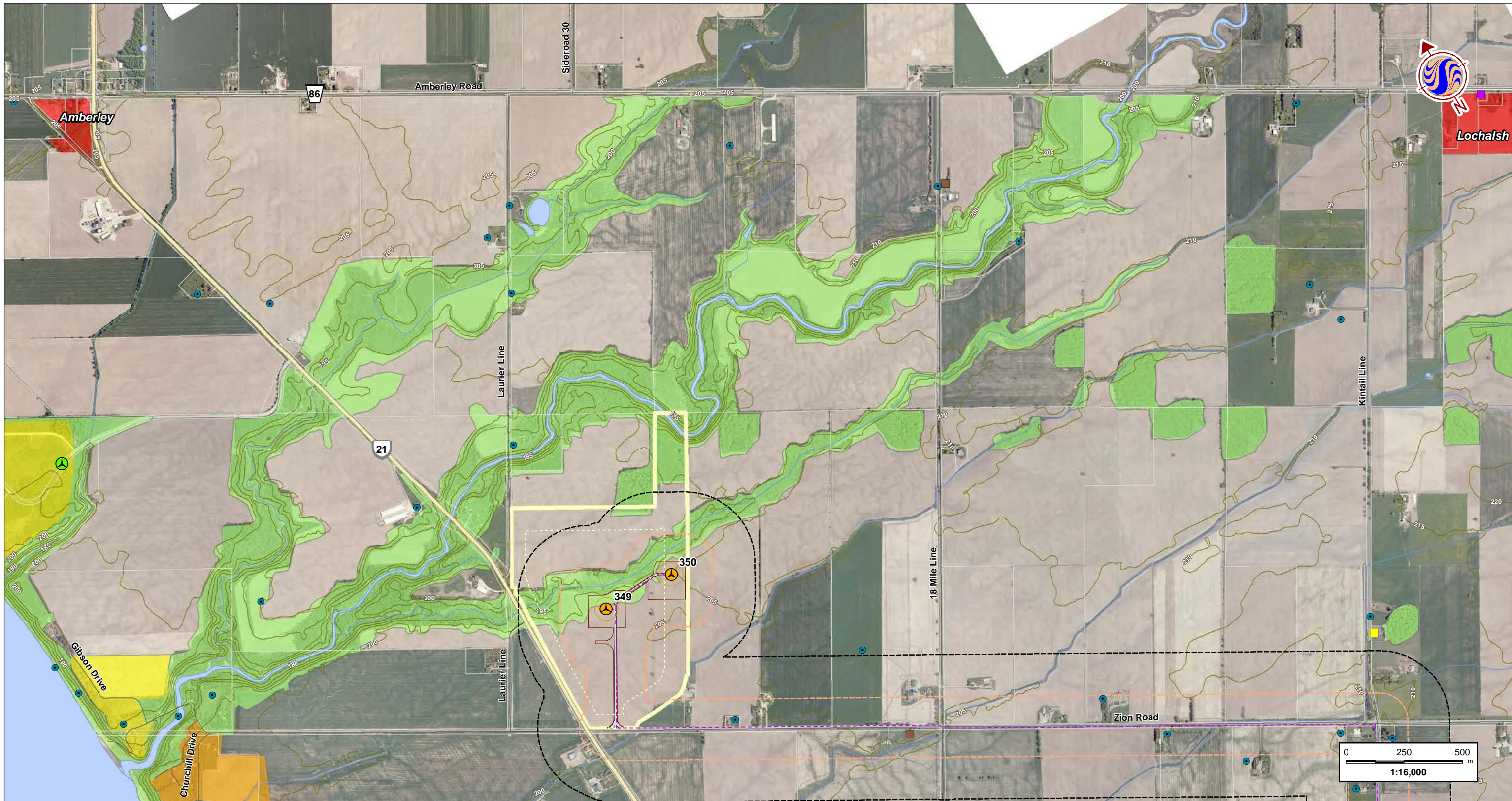
Proposed Project Components	Existing Features
Turbine Location	Expressway / Highway
Met Tower	Road
Substation	Railway - Abandoned
Transformer Station	Hydro Line
Project Component	Watercourse
	Waterbody
	Municipal Boundary
	Provincial Park

Client/Project
 K2 Wind Ontario Limited Partnership
 K2 Wind Power Project

Figure No.
 1

Title
Project Location - Overview

DRAFT



W:\active\60960738\drawing\MXD\PC\Construction\PlanReport\160960738_Fig2_SocioEconomicFeatures_20120902.mxd
 Revised: 2012-08-02 By: p.worsell

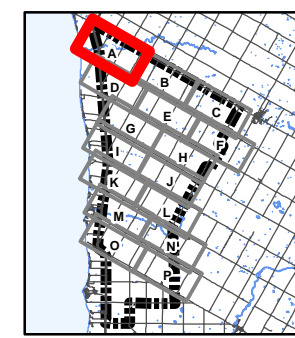
Notes
 1. Coordinate System: NAD 1983 UTM Zone 17N
 2. Base features produced under license with the Ontario Ministry of Natural Resources © Queen's Printer for Ontario, 2012; © Townships of Ashfield-Colborne-Wawanosh, 2012. Project Layout: WFL194.
 3. Orthographic imagery provided by © First Base Solutions, 2012. Imagery taken in Spring 2006.

August 2012
 160960738



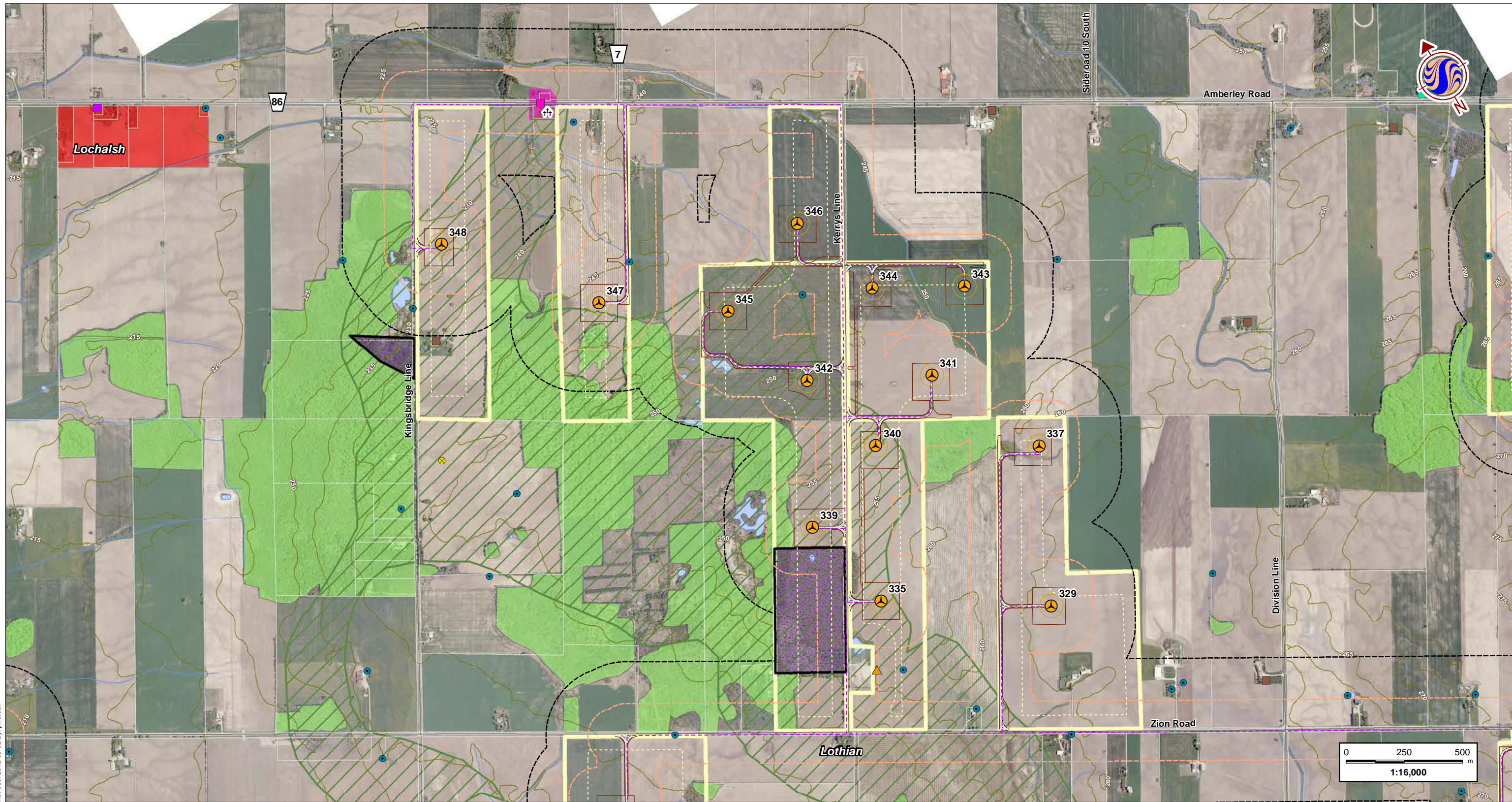
Legend

- | |
|--|
| <ul style="list-style-type: none"> 300m Study Area 120m Zone of Investigation Proposed Project Components ● Turbine Location Turbine Blade Sweep Area ● Met Tower Access Road Alternate Access Road Buildable Area Crane Path Met Tower Cabling Transmission Line Transmission Line (Alternate) Collector Line System Substation/Transformer Station Property Participating Property Property Line/Road Setback Existing Features Expressway / Highway Road Elevation Contour (metres ASL) Hydro Line Pipeline Watercourse Waterbody Property Boundary ● Existing Turbine Location † Cemetery ▲ Landfill - Active △ Landfill - Closed ● Petroleum Well ● School ● Water Well Land Use Designations Agriculture Extractive Lakeshore Residential Natural Environment Recreation Residential Park Village/Hamlet Aggregate Resources Aggregate Site - Active Aggregate Site - Revoked/Surrendered Sterilized Deposit Primary Aggregate Secondary Aggregate Cultural Heritage Features Barn Church Commercial House Landscape School Landscape Area |
|--|

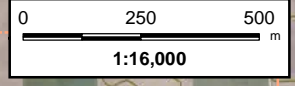


Client/Project
 K2 Wind Ontario Limited Partnership
 K2 Wind Power Project
 Figure No.
2-A **DRAFT**
 Title
Socio-Economic Features

W:\active\60960738\drawing\MXD\A\PC\ConstructionPlanReport\160960738_Fig2_SocioEconomicFeatures_20120902.mxd
 Revised: 2012-08-02 By: p.worsell



Notes
 1. Coordinate System: NAD 1983 UTM Zone 17N
 2. Base features produced under license with the Ontario Ministry of Natural Resources © Queen's Printer for Ontario, 2012; © Townships of Ashfield-Colborne-Wawanosh, 2012. Project Layout: WFL194.
 3. Orthographic imagery provided by © First Base Solutions, 2012. Imagery taken in Spring 2006.

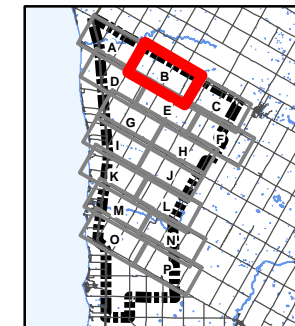


August 2012
 160960738



Legend

- | | | | |
|---|--|--|--|
| <ul style="list-style-type: none"> 300m Study Area 120m Zone of Investigation Proposed Project Components Turbine Location Turbine Blade Sweep Area Met Tower Access Road Alternate Access Road Buildable Area Crane Path Met Tower Cabling Transmission Line Transmission Line (Alternate) Collector Line System Substation/Transformer Station Property Participating Property Property Line/Road Setback Existing Features Expressway / Highway Road Elevation Contour (metres ASL) Hydro Line Pipeline Watercourse Waterbody Property Boundary Existing Turbine Location Cemetery Landfill - Active Landfill - Closed Petroleum Well School Water Well | <ul style="list-style-type: none"> Agriculture Extractive Lakeshore Residential Natural Environment Recreation Residential Park Village/Hamlet | <ul style="list-style-type: none"> Aggregate Site - Active Aggregate Site - Revoked/Surrendered Sterilized Deposit Primary Aggregate Secondary Aggregate | <ul style="list-style-type: none"> Barn Church Commercial House Landscape School Landscape Area |
|---|--|--|--|

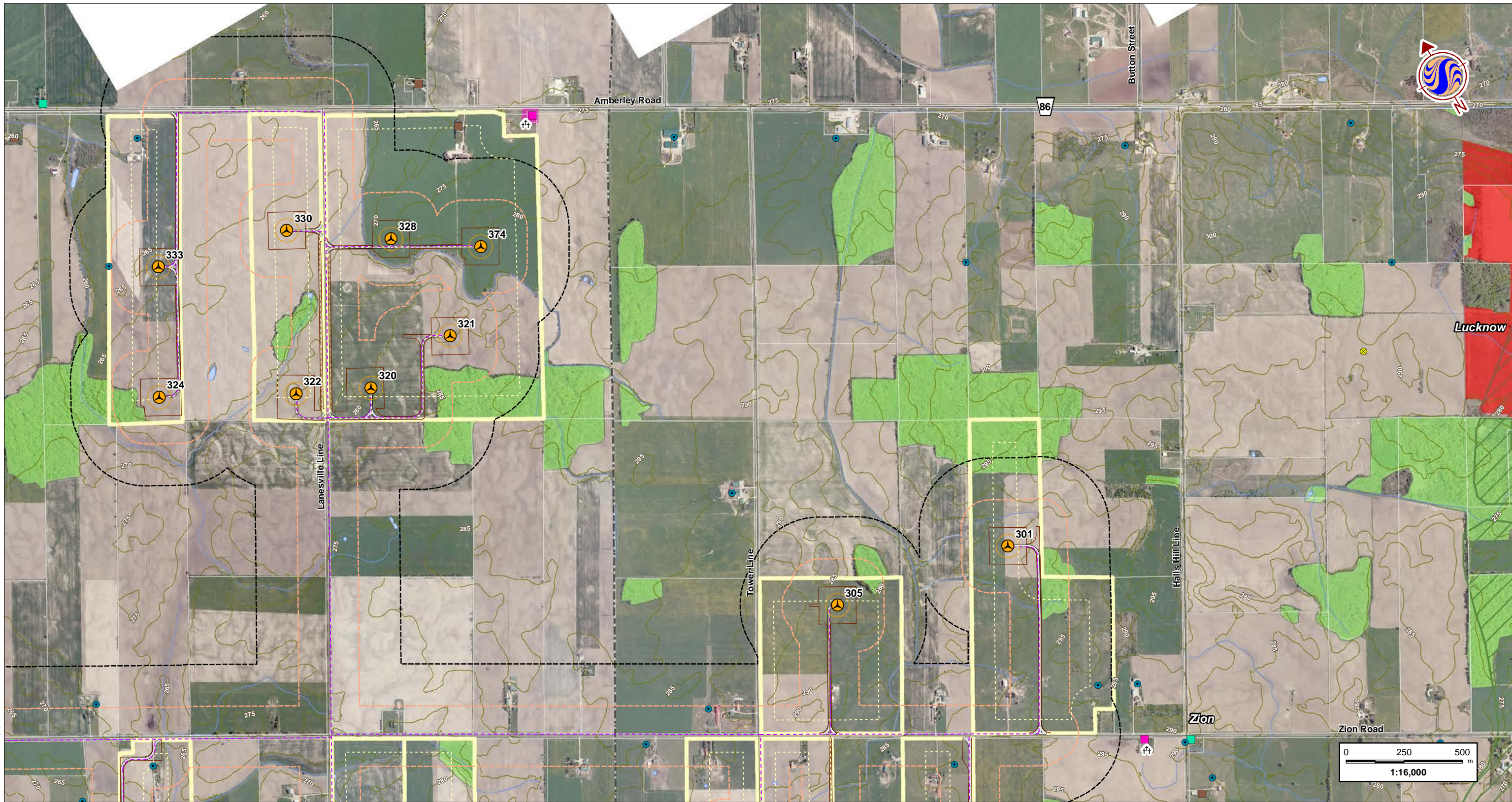


Client/Project
 K2 Wind Ontario Limited Partnership
 K2 Wind Power Project

Figure No.
2-B **DRAFT**

Title
Socio-Economic Features

W:\active\60960738\drawing\MXD\PC\ConstructionPlanReport\160960738_Fig2_SocioEconomicFeatures_20120902.mxd
 Revised: 2012-08-02 By: p.worsell



Notes
 1. Coordinate System: NAD 1983 UTM Zone 17N
 2. Base features produced under license with the Ontario Ministry of Natural Resources © Queen's Printer for Ontario, 2012; © Townships of Ashfield-Colborne-Wawanosh, 2012. Project Layout: WFL194.
 3. Orthographic imagery provided by © First Base Solutions, 2012. Imagery taken in Spring 2006.

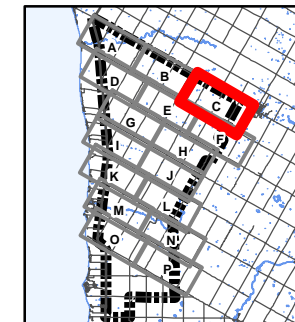
August 2012
 160960738



Stantec

Legend

- 300m Study Area
- 120m Zone of Investigation
- Proposed Project Components**
- Turbine Location
- Turbine Blade Sweep Area
- Met Tower
- Access Road
- Alternate Access Road
- Buildable Area
- Crane Path
- Met Tower Cabling
- Transmission Line
- Transmission Line (Alternate)
- Collector Line System
- Substation/Transformer Station Property
- Participating Property
- Property Line/Road Setback
- Existing Features**
- Expressway / Highway
- Road
- Elevation Contour (metres ASL)
- Hydro Line
- Pipeline
- Watercourse
- Waterbody
- Property Boundary
- Existing Turbine Location
- Cemetery
- Landfill - Active
- Landfill - Closed
- Petroleum Well
- School
- Water Well
- Land Use Designations**
- Agriculture
- Extractive
- Lakeshore Residential
- Natural Environment
- Recreation
- Residential Park
- Village/Hamlet
- Aggregate Resources**
- Aggregate Site - Active
- Aggregate Site - Revoked/Surrendered
- Sterilized Deposit
- Primary Aggregate
- Secondary Aggregate
- Cultural Heritage Features**
- Barn
- Church
- Commercial
- House
- Landscape
- School
- Landscape Area



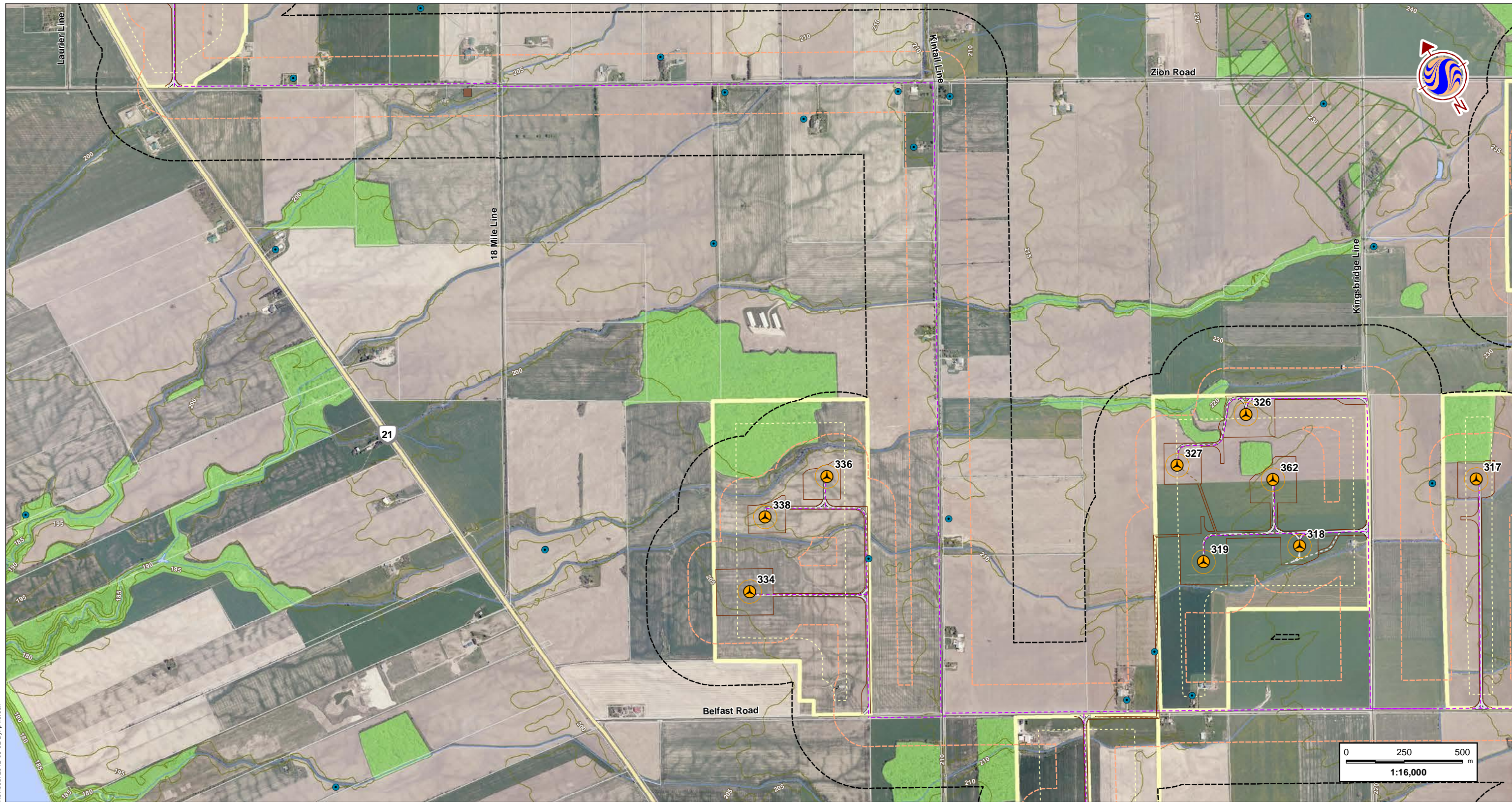
Client/Project
 K2 Wind Ontario Limited Partnership
 K2 Wind Power Project

Figure No.
2-C

Title
Socio-Economic Features

DRAFT

W:\active\60960738\drawing\MXD\A\PC\Construction\PlanReport\160960738_Fig2_SocioEconomicFeatures_20120802.mxd
 Revised: 2012-08-02 By: p.worsell



Notes
 1. Coordinate System: NAD 1983 UTM Zone 17N
 2. Base features produced under license with the Ontario Ministry of Natural Resources © Queen's Printer for Ontario, 2012; © Townships of Ashfield-Colborne-Wawanosh, 2012. Project Layout: WFL194.
 3. Orthographic imagery provided by © First Base Solutions, 2012. Imagery taken in Spring 2006.

August 2012
 160960738



Legend

- | |
|---|
| <ul style="list-style-type: none"> 300m Study Area 120m Zone of Investigation Proposed Project Components ● Turbine Location Turbine Blade Sweep Area ○ Met Tower Access Road Alternate Access Road Buildable Area Crane Path Met Tower Cabling Transmission Line Transmission Line (Alternate) Collector Line System Substation/Transformer Station Property Participating Property Property Line/Road Setback Existing Features Expressway / Highway Road Elevation Contour (metres ASL) Hydro Line Pipeline Watercourse Waterbody Property Boundary ● Existing Turbine Location † Cemetery ▲ Landfill - Active △ Landfill - Closed ⊗ Petroleum Well ● School ● Water Well Land Use Designations Agriculture Extractive Lakeshore Residential Natural Environment Recreation Residential Park Village/Hamlet Aggregate Resources Aggregate Site - Active Aggregate Site - Revoked/Surrendered Sterilized Deposit Primary Aggregate Secondary Aggregate Cultural Heritage Features Barn Church Commercial House Landscape School Landscape Area |
|---|

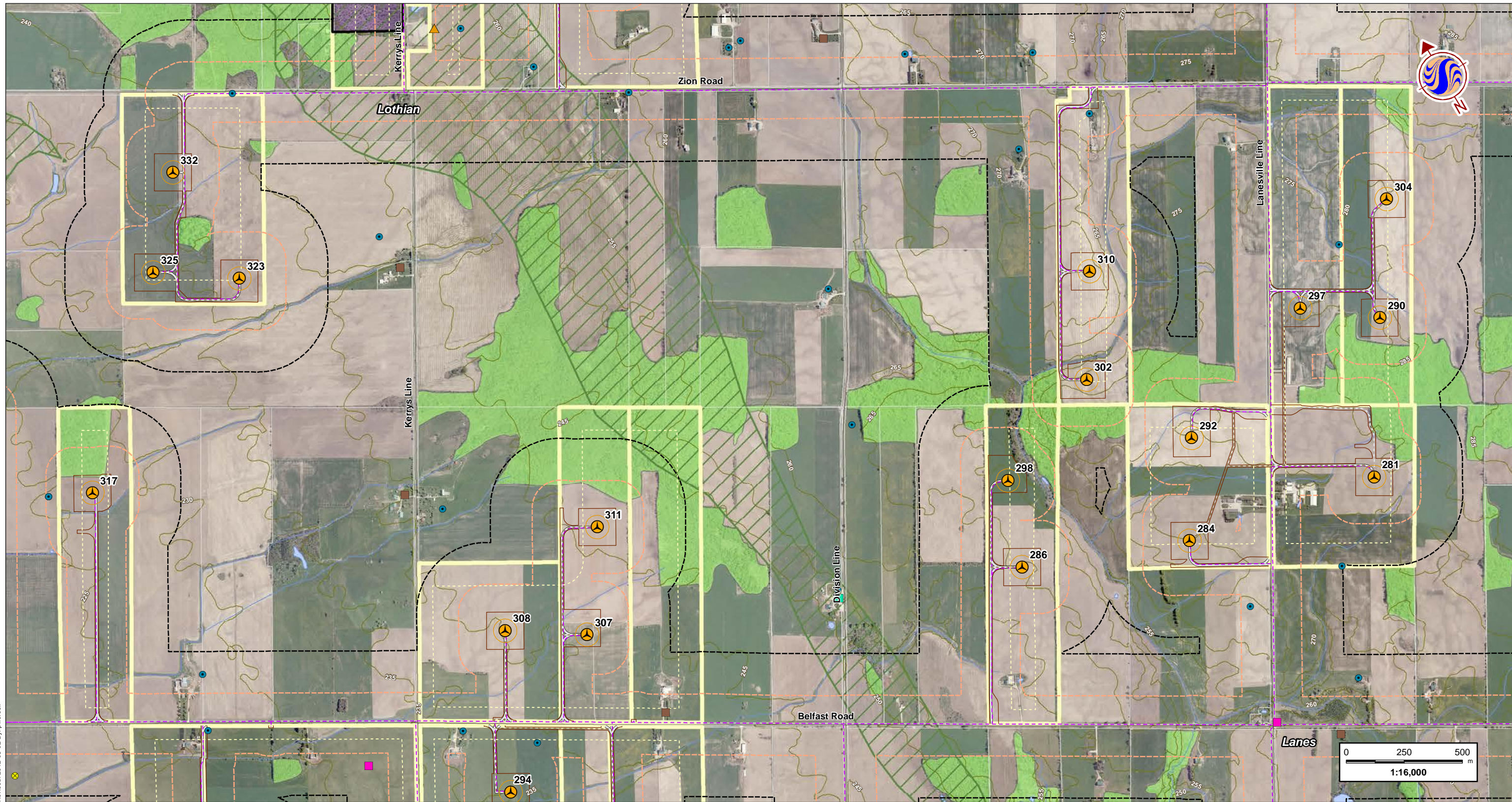


Client/Project
 K2 Wind Ontario Limited Partnership
 K2 Wind Power Project

Figure No.
2-D **DRAFT**

Title
Socio-Economic Features

W:\active\60960738\drawing\MXD\A\PC\Construction\PlanReport\160960738_Fig2_SocioEconomicFeatures_20120802.mxd
 Revised: 2012-08-02 By: p.worsell



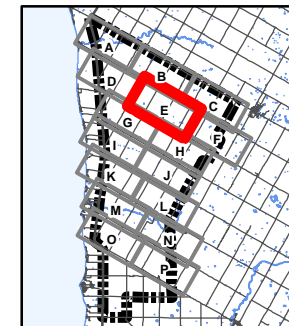
Notes
 1. Coordinate System: NAD 1983 UTM Zone 17N
 2. Base features produced under license with the Ontario Ministry of Natural Resources © Queen's Printer for Ontario, 2012; © Townships of Ashfield-Colborne-Wawanosh, 2012. Project Layout: WFL194.
 3. Orthographic imagery provided by © First Base Solutions, 2012. Imagery taken in Spring 2006.

August 2012
 160960738



Legend

- | |
|--|
| <ul style="list-style-type: none"> 300m Study Area 120m Zone of Investigation Proposed Project Components Turbine Location Turbine Blade Sweep Area Met Tower Access Road Alternate Access Road Buildable Area Crane Path Met Tower Cabling Transmission Line Transmission Line (Alternate) Collector Line System Substation/Transformer Station Property Participating Property Property Line/Road Setback Existing Features Expressway / Highway Road Elevation Contour (metres ASL) Hydro Line Pipeline Watercourse Waterbody Property Boundary Existing Turbine Location Cemetery Landfill - Active Landfill - Closed Petroleum Well School Water Well Land Use Designations Agriculture Extractive Lakeshore Residential Natural Environment Recreation Residential Park Village/Hamlet Aggregate Resources Aggregate Site - Active Aggregate Site - Revoked/Surrendered Sterilized Deposit Primary Aggregate Secondary Aggregate Cultural Heritage Features Barn Church Commercial House Landscape School Landscape Area |
|--|

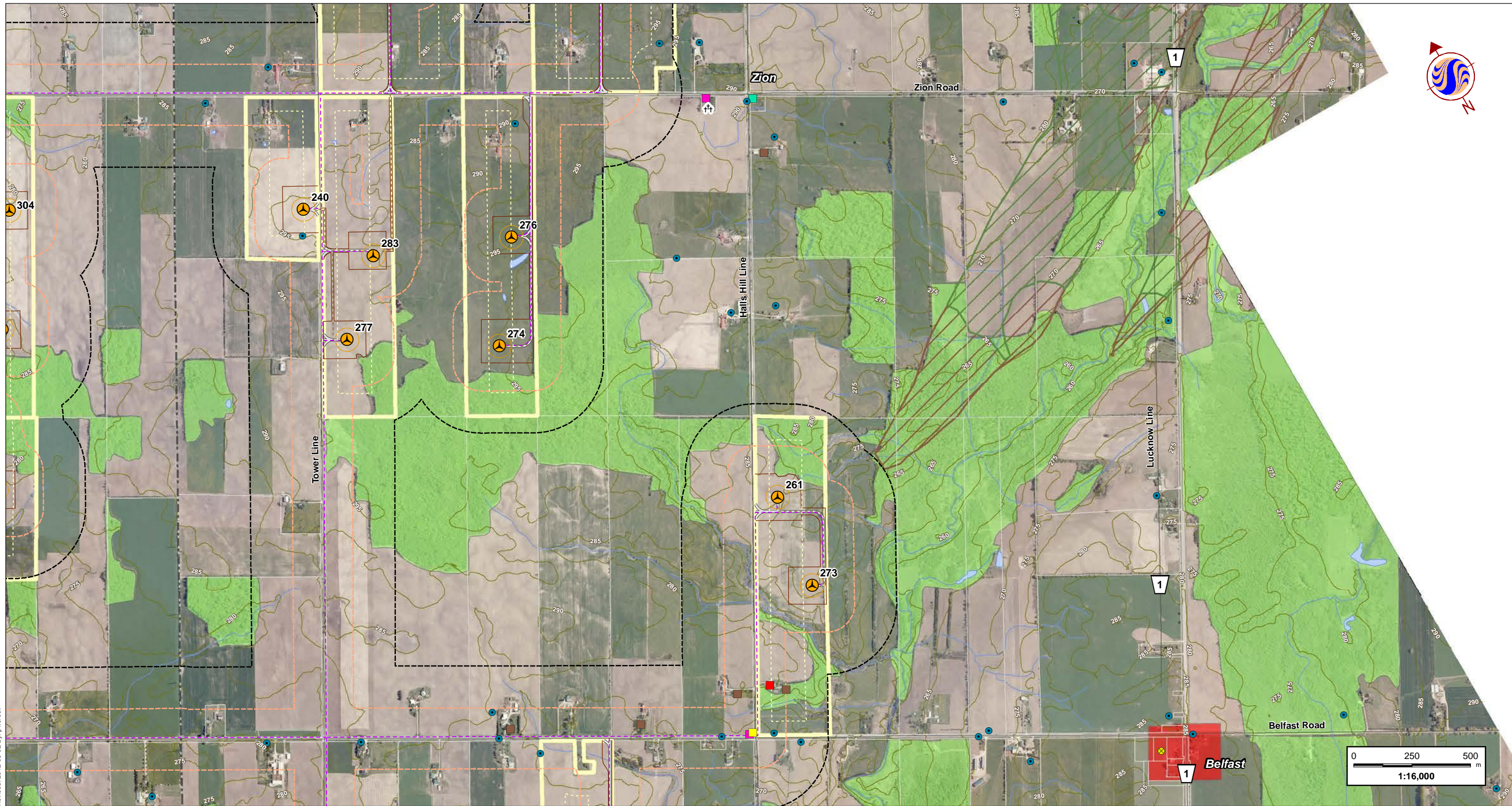


Client/Project
 K2 Wind Ontario Limited Partnership
 K2 Wind Power Project

Figure No.
2-E **DRAFT**

Title
Socio-Economic Features

W:\active\160960738\drawing\MXD\PC\ConstructionPlanReport\160960738_Fig2_SocioEconomicFeatures_20120902.mxd
 Revised: 2012-08-02 By: p.worsell



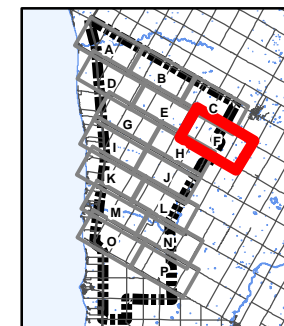
Notes
 1. Coordinate System: NAD 1983 UTM Zone 17N
 2. Base features produced under license with the Ontario Ministry of Natural Resources © Queen's Printer for Ontario, 2012; © Townships of Ashfield-Colborne-Wawanosh, 2012. Project Layout: WFL194.
 3. Orthographic imagery provided by © First Base Solutions, 2012. Imagery taken in Spring 2006.

August 2012
 160960738



Legend

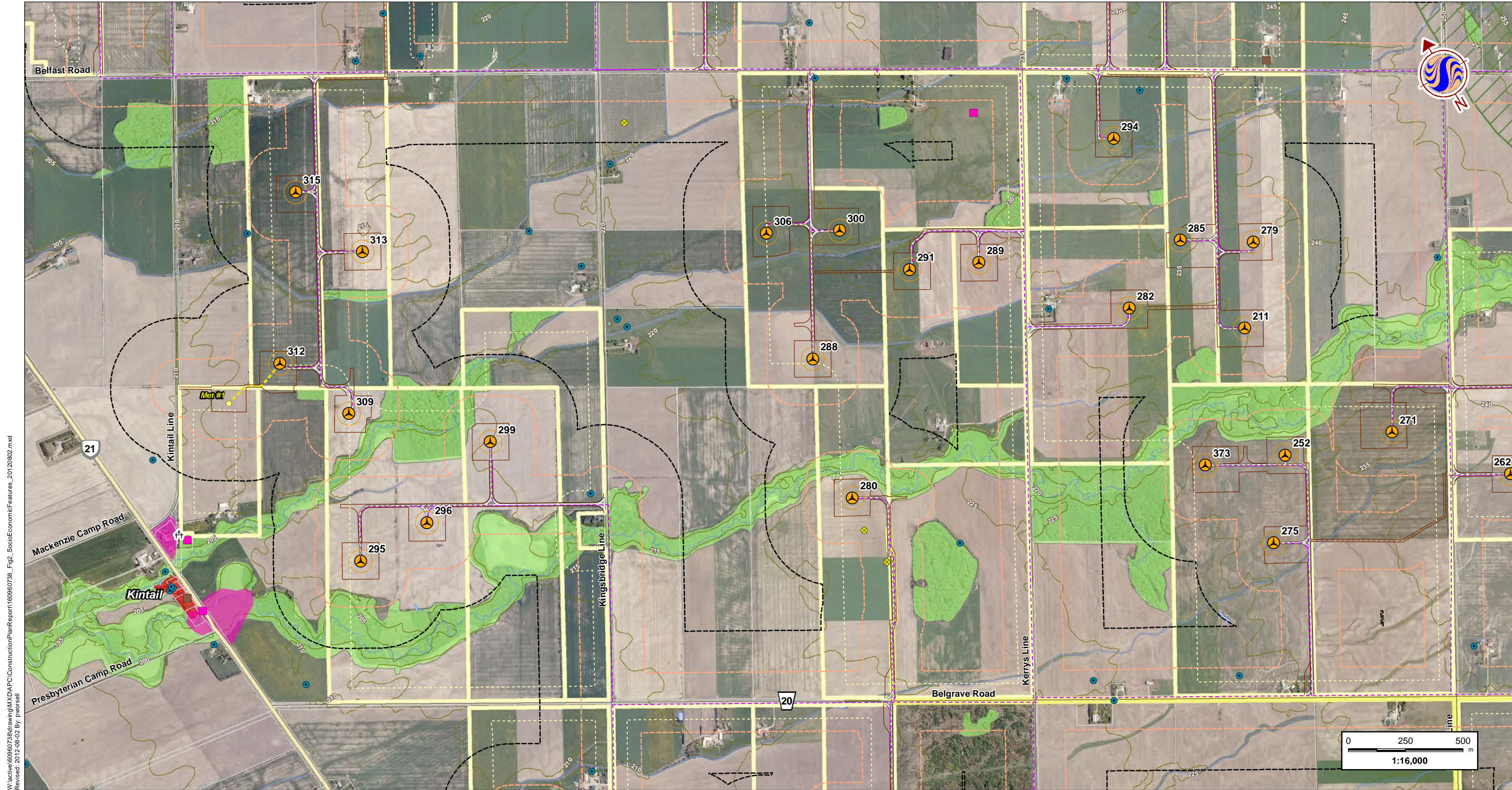
- | |
|--|
| <ul style="list-style-type: none"> 300m Study Area 120m Zone of Investigation Proposed Project Components ● Turbine Location Turbine Blade Sweep Area ● Met Tower Access Road Alternate Access Road Buildable Area Crane Path Met Tower Cabling Transmission Line Transmission Line (Alternate) Collector Line System Substation/Transformer Station Property Participating Property Property Line/Road Setback Existing Features Expressway / Highway Road Elevation Contour (metres ASL) Hydro Line Pipeline Watercourse Waterbody Property Boundary ● Existing Turbine Location + Cemetery ▲ Landfill - Active ▲ Landfill - Closed ● Petroleum Well ● School ● Water Well Land Use Designations Agriculture Extractive Lakeshore Residential Natural Environment Recreation Residential Park Village/Hamlet Aggregate Resources Aggregate Site - Active Aggregate Site - Revoked/Surrendered Sterilized Deposit Primary Aggregate Secondary Aggregate Cultural Heritage Features Barn Church Commercial House Landscape School Landscape Area |
|--|



Client/Project
 K2 Wind Ontario Limited Partnership
 K2 Wind Power Project

Figure No.
2-F **DRAFT**

Title
Socio-Economic Features



W:\active\60960738\drawing\MXD\PC\ConstructionPlan\Report\160960738_Fig2_SocioEconomicFeatures_20120902.mxd
 Revised: 2012-08-02 By: p.worsell

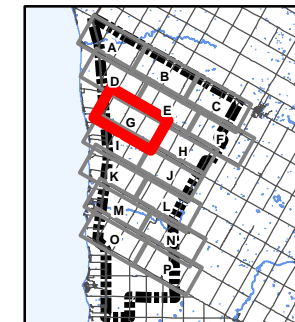
Notes
 1. Coordinate System: NAD 1983 UTM Zone 17N
 2. Base features produced under license with the Ontario Ministry of Natural Resources © Queen's Printer for Ontario, 2012; © Townships of Ashfield-Colborne-Wawanosh, 2012. Project Layout: WFL194.
 3. Orthographic imagery provided by © First Base Solutions, 2012. Imagery taken in Spring 2006.

August 2012
160960738



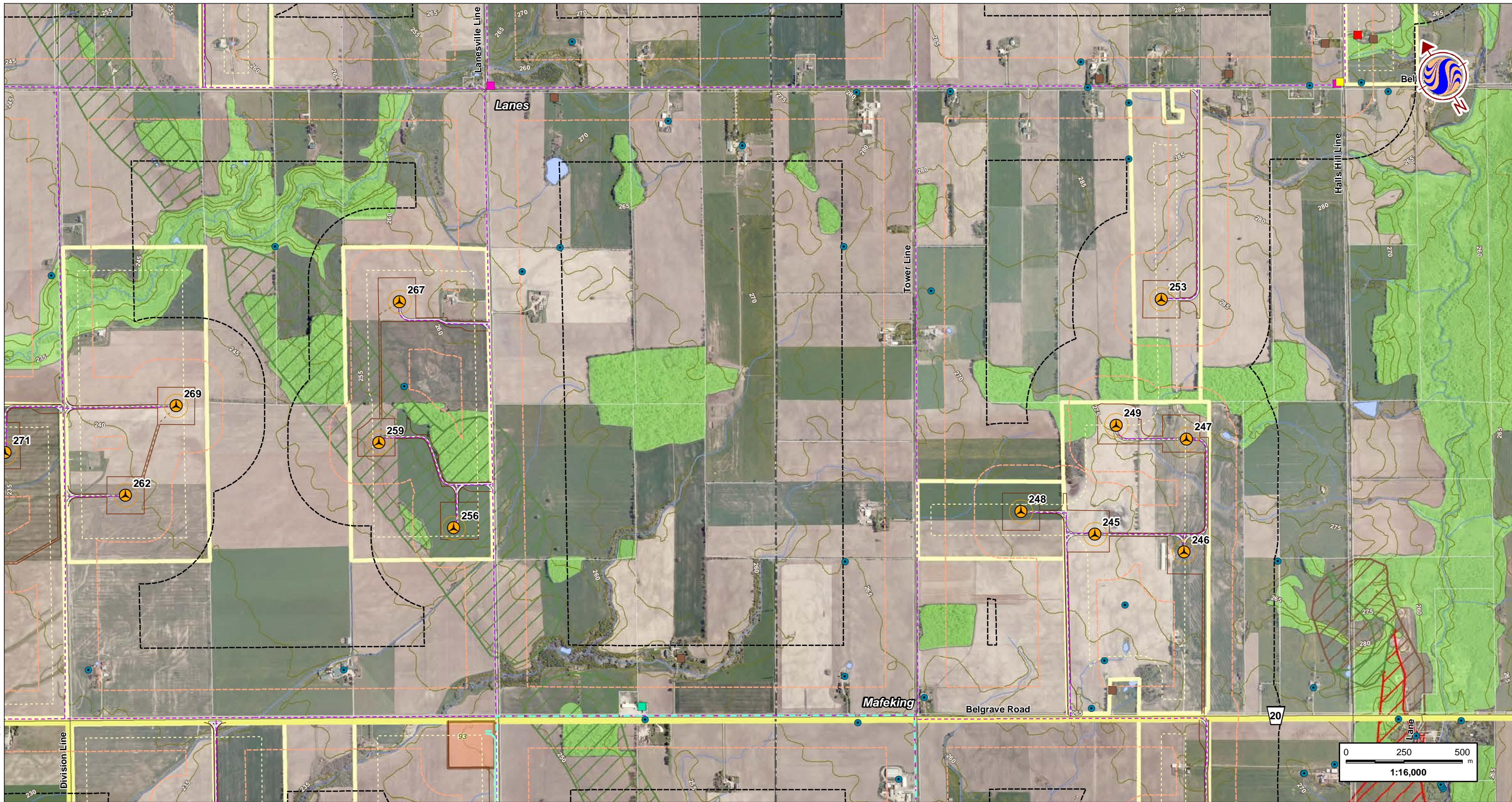
Legend

- | |
|---|
| <ul style="list-style-type: none"> 300m Study Area 120m Zone of Investigation Proposed Project Components Turbine Location Turbine Blade Sweep Area Met Tower Access Road Alternate Access Road Buildable Area Crane Path Met Tower Cabling Transmission Line Transmission Line (Alternate) Collector Line System Substation/Transformer Station Property Participating Property Property Line/Road Setback Existing Features Expressway / Highway Road Elevation Contour (metres ASL) Hydro Line Pipeline Watercourse Waterbody Property Boundary Existing Turbine Location Cemetery Landfill - Active Landfill - Closed Petroleum Well School Water Well Land Use Designations Agriculture Extractive Lakeshore Residential Natural Environment Recreation Residential Park Village/Hamlet Aggregate Resources Aggregate Site - Active Aggregate Site - Revoked/Surrendered Sterilized Deposit Primary Aggregate Secondary Aggregate Cultural Heritage Features Barn Church Commercial House Landscape School Landscape Area |
|---|



Client/Project
 K2 Wind Ontario Limited Partnership
 K2 Wind Power Project
 Figure No.
2-G **DRAFT**
 Title
Socio-Economic Features

W:\active\60960738\drawing\MXD\PC\Construction\PlanReport\160960738_Fig2_SocioEconomicFeatures_20120902.mxd
 Revised: 2012-08-02 By: p.worsell



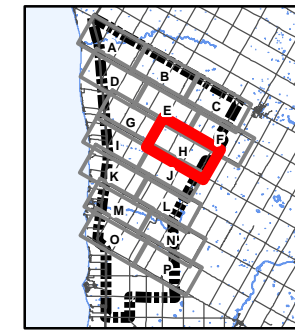
Notes
 1. Coordinate System: NAD 1983 UTM Zone 17N
 2. Base features produced under license with the Ontario Ministry of Natural Resources © Queen's Printer for Ontario, 2012; © Townships of Ashfield-Colborne-Wawanosh, 2012. Project Layout: WFL194.
 3. Orthographic imagery provided by © First Base Solutions, 2012. Imagery taken in Spring 2006.

August 2012
 160960738



Legend

- | |
|---|
| <ul style="list-style-type: none"> 300m Study Area 120m Zone of Investigation Proposed Project Components ● Turbine Location ● Turbine Blade Sweep Area ● Met Tower Access Road Alternate Access Road Buildable Area Crane Path Met Tower Cabling Transmission Line Transmission Line (Alternate) Collector Line System Substation/Transformer Station Property Participating Property Property Line/Road Setback Existing Features Expressway / Highway Road Elevation Contour (metres ASL) Hydro Line Pipeline Watercourse Waterbody Property Boundary ● Existing Turbine Location + Cemetery ▲ Landfill - Active △ Landfill - Closed ⊗ Petroleum Well ● School ● Water Well Land Use Designations Agriculture Extractive Lakeshore Residential Natural Environment Recreation Residential Park Village/Hamlet Aggregate Resources Aggregate Site - Active Aggregate Site - Revoked/Surrendered Sterilized Deposit Primary Aggregate Secondary Aggregate Cultural Heritage Features Barn Church Commercial House Landscape School Landscape Area |
|---|

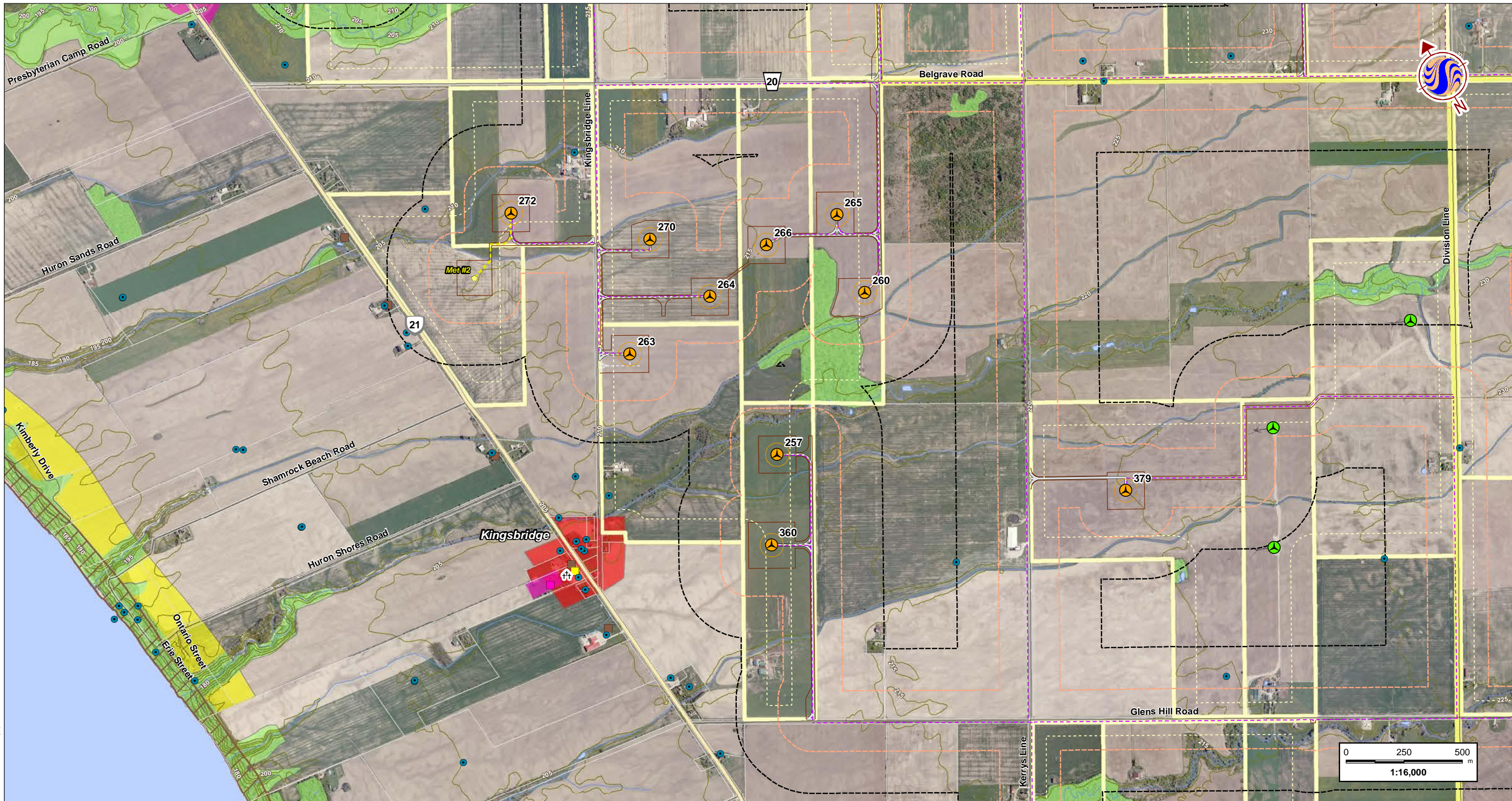


Client/Project
 K2 Wind Ontario Limited Partnership
 K2 Wind Power Project

Figure No.
2-H

Title
Socio-Economic Features

DRAFT



W:\active\60960738\drawing\MXD\PC\ConstructionPlanReport\160960738_Fig2_SocioEconomicFeatures_20120902.mxd
 Revised: 2012-08-02 By: p.worsell

Notes
 1. Coordinate System: NAD 1983 UTM Zone 17N
 2. Base features produced under license with the Ontario Ministry of Natural Resources © Queen's Printer for Ontario, 2012; © Townships of Ashfield-Colborne-Wawanosh, 2012. Project Layout: WFL194.
 3. Orthographic imagery provided by © First Base Solutions, 2012. Imagery taken in Spring 2006.

August 2012
 160960738



Legend

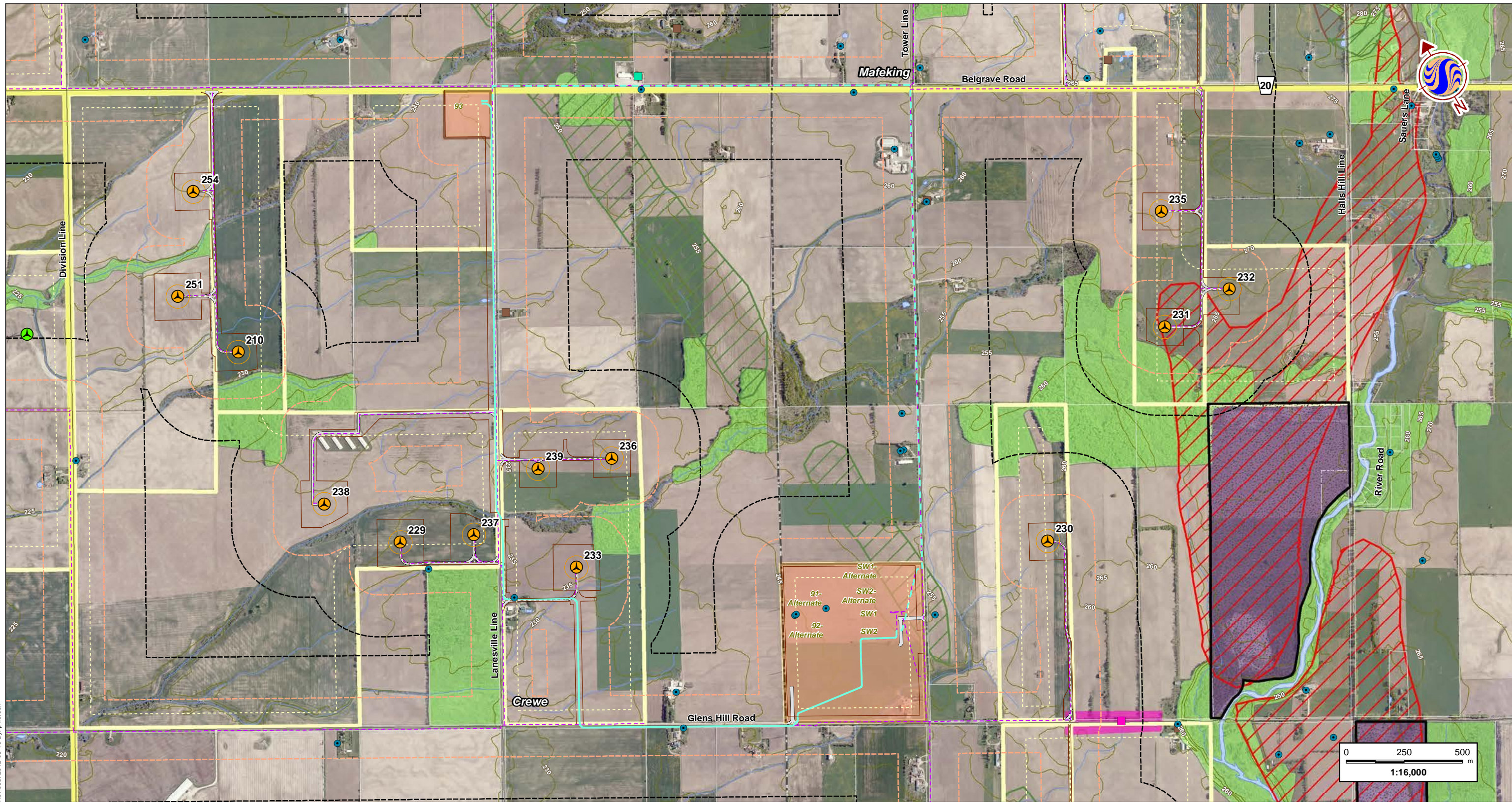
- | |
|--|
| <ul style="list-style-type: none"> 300m Study Area 120m Zone of Investigation Proposed Project Components Turbine Location Turbine Blade Sweep Area Met Tower Access Road Alternate Access Road Buildable Area Crane Path Met Tower Cabling Transmission Line Transmission Line (Alternate) Collector Line System Substation/Transformer Station Property Participating Property Property Line/Road Setback Existing Features Expressway / Highway Road Elevation Contour (metres ASL) Hydro Line Pipeline Watercourse Waterbody Property Boundary Existing Turbine Location Cemetery Landfill - Active Landfill - Closed Petroleum Well School Water Well Land Use Designations Agriculture Extractive Lakeshore Residential Natural Environment Recreation Residential Park Village/Hamlet Aggregate Resources Aggregate Site - Active Aggregate Site - Revoked/Surrendered Sterilized Deposit Primary Aggregate Secondary Aggregate Cultural Heritage Features Barn Church Commercial House Landscape School Landscape Area |
|--|



Client/Project
 K2 Wind Ontario Limited Partnership
 K2 Wind Power Project
 Figure No.
2-1
 Title
Socio-Economic Features

DRAFT

W:\active\60960738\drawing\MXD\A\PC\Construction\PlanReport\160960738_Fig2_SocioEconomicFeatures_20120802.mxd
 Revised: 2012-08-10 By: p.worsell



Notes
 1. Coordinate System: NAD 1983 UTM Zone 17N
 2. Base features produced under license with the Ontario Ministry of Natural Resources © Queen's Printer for Ontario, 2012; © Townships of Ashfield-Colborne-Wawanosh, 2012. Project Layout: WFL194.
 3. Orthographic imagery provided by © First Base Solutions, 2012. Imagery taken in Spring 2006.

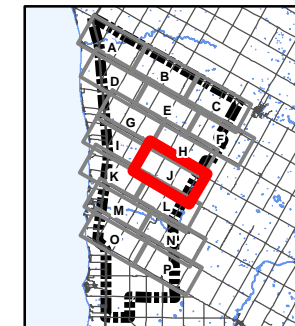
August 2012
 160960738



Stantec

Legend

- | |
|--|
| <ul style="list-style-type: none"> 300m Study Area 120m Zone of Investigation Proposed Project Components Turbine Location Turbine Blade Sweep Area Met Tower Access Road Alternate Access Road Buildable Area Crane Path Met Tower Cabling Transmission Line Transmission Line (Alternate) Collector Line System Substation/Transformer Station Property Participating Property Property Line/Road Setback Existing Features Expressway / Highway Road Elevation Contour (metres ASL) Hydro Line Pipeline Watercourse Waterbody Property Boundary Existing Turbine Location Cemetery Landfill - Active Landfill - Closed Petroleum Well School Water Well Land Use Designations Agriculture Extractive Lakeshore Residential Natural Environment Recreation Residential Park Village/Hamlet Aggregate Resources Aggregate Site - Active Aggregate Site - Revoked/Surrendered Sterilized Deposit Primary Aggregate Secondary Aggregate Cultural Heritage Features Barn Church Commercial House Landscape School Landscape Area |
|--|

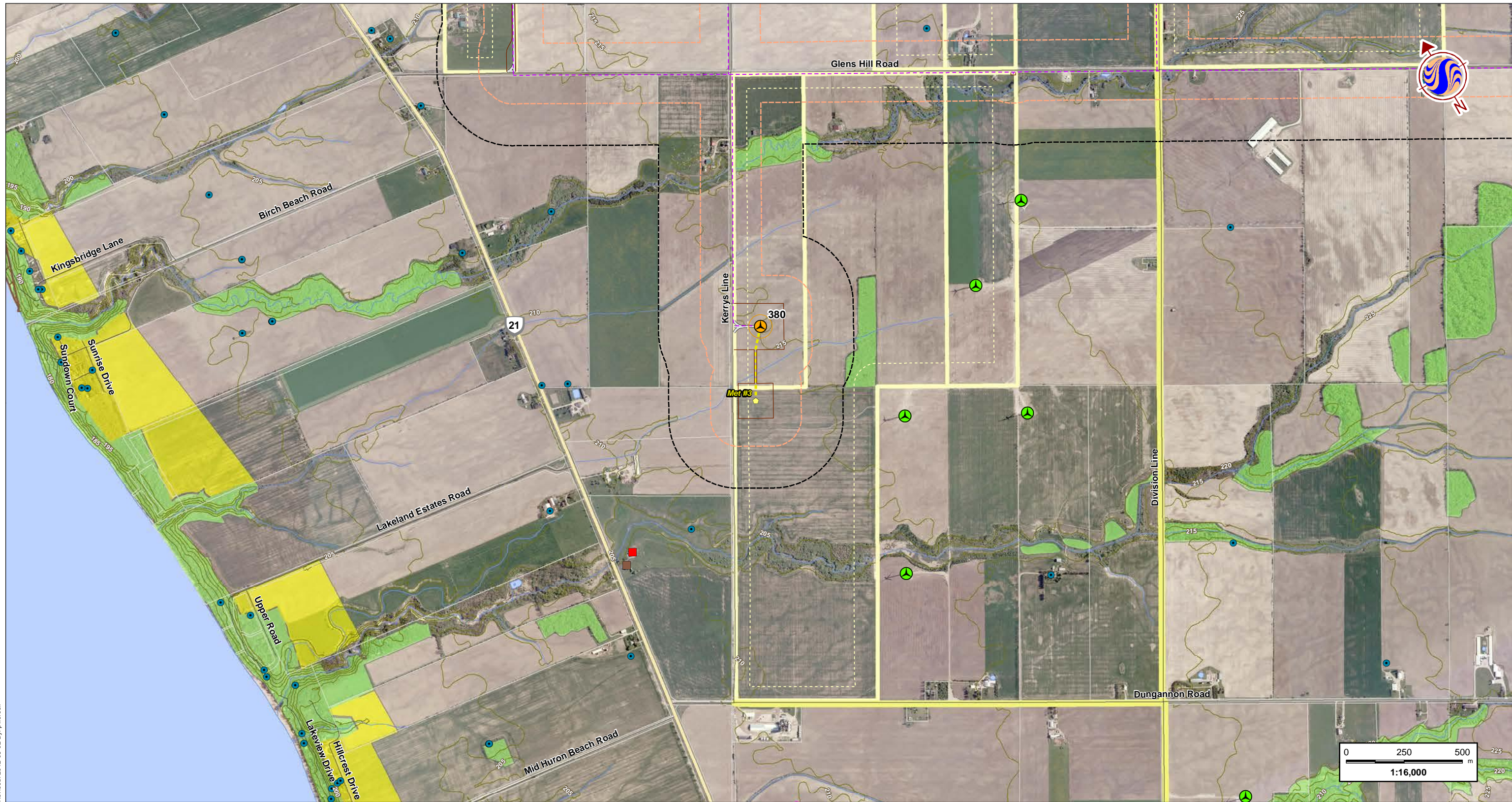


Client/Project
 K2 Wind Ontario Limited Partnership
 K2 Wind Power Project

Figure No.
2-J **DRAFT**

Title
Socio-Economic Features

W:\active\60960738\drawing\MXD\A\PC\Construction\PlanReport\160960738_Fig2_SocioEconomicFeatures_20120902.mxd
 Revised: 2012-08-02 By: p.worsell



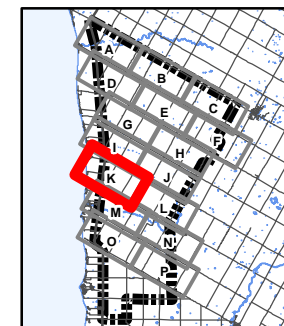
Notes
 1. Coordinate System: NAD 1983 UTM Zone 17N
 2. Base features produced under license with the Ontario Ministry of Natural Resources © Queen's Printer for Ontario, 2012; © Townships of Ashfield-Colborne-Wawanosh, 2012. Project Layout: WFL194.
 3. Orthographic imagery provided by © First Base Solutions, 2012. Imagery taken in Spring 2006.

August 2012
 160960738



Legend

- | |
|---|
| <ul style="list-style-type: none"> 300m Study Area 120m Zone of Investigation Proposed Project Components ● Turbine Location Turbine Blade Sweep Area ● Met Tower Access Road Alternate Access Road Buildable Area Crane Path Met Tower Cabling Transmission Line Transmission Line (Alternate) Collector Line System Substation/Transformer Station Property Participating Property Property Line/Road Setback Existing Features Expressway / Highway Road Elevation Contour (metres ASL) Hydro Line Pipeline Watercourse Waterbody Property Boundary ● Existing Turbine Location † Cemetery ▲ Landfill - Active ▲ Landfill - Closed ● Petroleum Well ● School ● Water Well Land Use Designations Agriculture Extractive Lakeshore Residential Natural Environment Recreation Residential Park Village/Hamlet Aggregate Resources Aggregate Site - Active Aggregate Site - Revoked/Surrendered Sterilized Deposit Primary Aggregate Secondary Aggregate Cultural Heritage Features Barn Church Commercial House Landscape School Landscape Area |
|---|

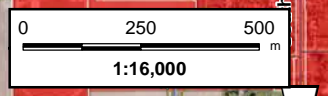
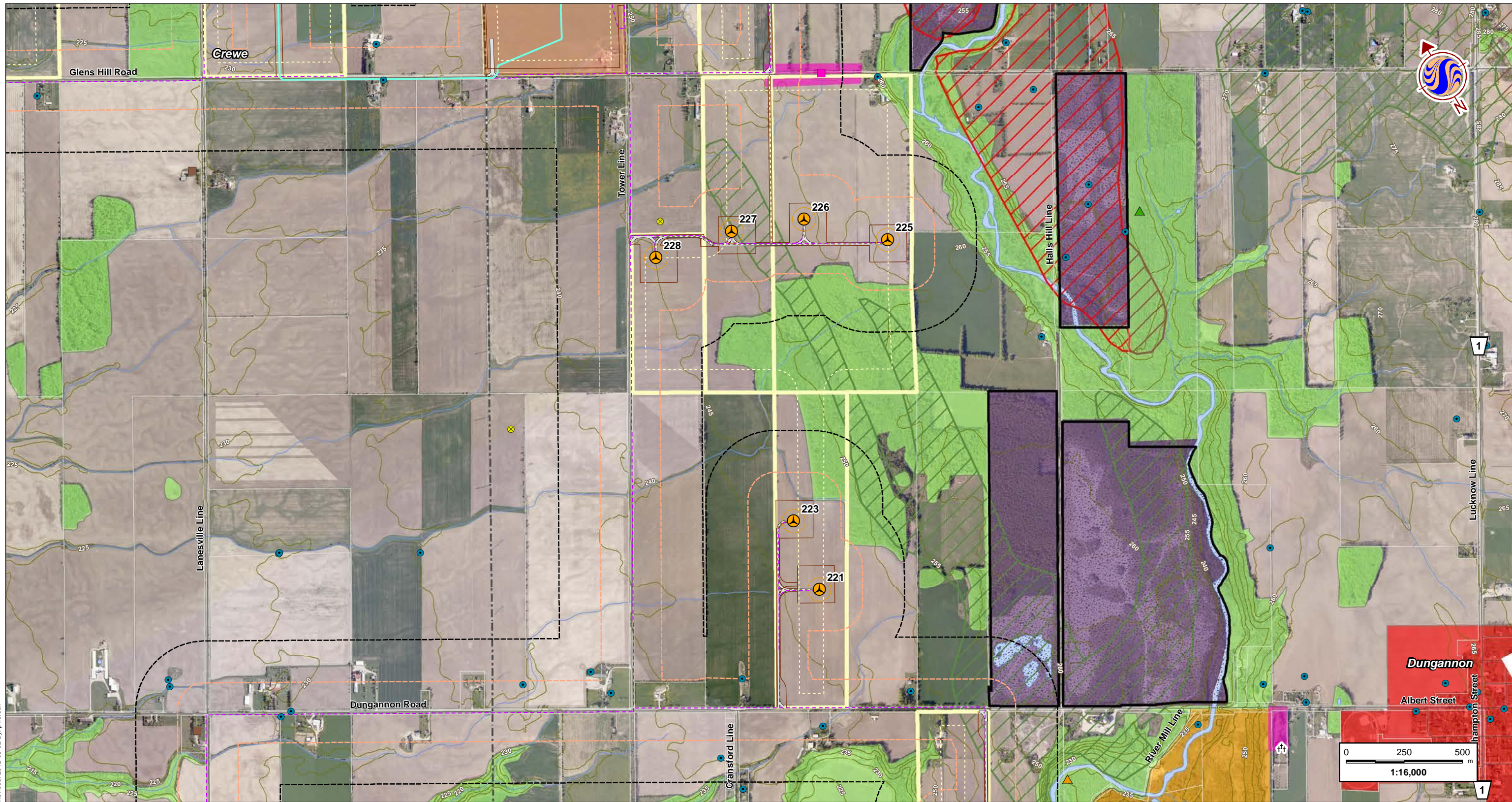


Client/Project
 K2 Wind Ontario Limited Partnership
 K2 Wind Power Project

Figure No.
2-K **DRAFT**

Title
Socio-Economic Features

W:\active\60960738\drawing\MXD\PC\Construction\PlanReport\160960738_Fig2_SocioEconomicFeatures_20120902.mxd
 Revised: 2012-08-02 By: p.worsell



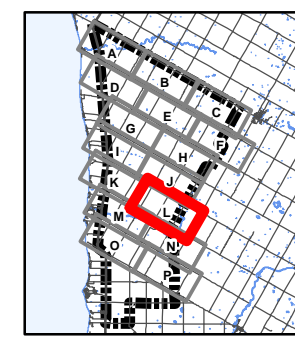
Notes
 1. Coordinate System: NAD 1983 UTM Zone 17N
 2. Base features produced under license with the Ontario Ministry of Natural Resources © Queen's Printer for Ontario, 2012; © Townships of Ashfield-Colborne-Wawanosh, 2012. Project Layout: WFL194.
 3. Orthographic imagery provided by © First Base Solutions, 2012. Imagery taken in Spring 2006.

August 2012
 160960738



Legend

- | |
|---|
| <ul style="list-style-type: none"> 300m Study Area 120m Zone of Investigation Proposed Project Components Turbine Location Turbine Blade Sweep Area Met Tower Access Road Alternate Access Road Buildable Area Crane Path Met Tower Cabling Transmission Line Transmission Line (Alternate) Collector Line System Substation/Transformer Station Property Participating Property Property Line/Road Setback Existing Features Expressway / Highway Road Elevation Contour (metres ASL) Hydro Line Pipeline Watercourse Waterbody Property Boundary Existing Turbine Location Cemetery Landfill - Active Landfill - Closed Petroleum Well School Water Well Land Use Designations Agriculture Extractive Lakeshore Residential Natural Environment Recreation Residential Park Village/Hamlet Aggregate Resources Aggregate Site - Active Aggregate Site - Revoked/Surrendered Sterilized Deposit Primary Aggregate Secondary Aggregate Cultural Heritage Features Barn Church Commercial House Landscape School Landscape Area |
|---|



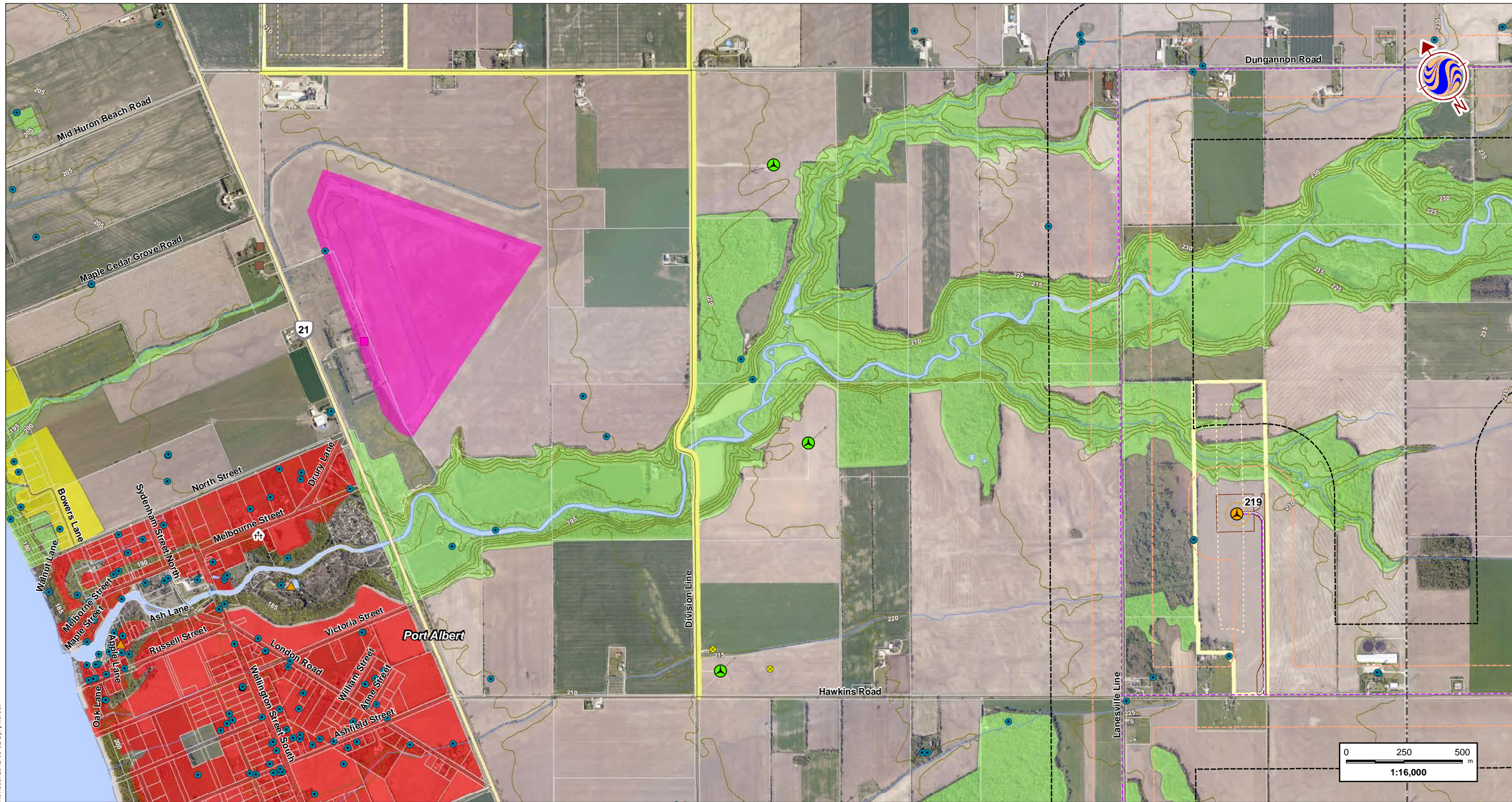
Client/Project
 K2 Wind Ontario Limited Partnership
 K2 Wind Power Project

Figure No.
2-L

Title
Socio-Economic Features

DRAFT

W:\active\60960738\drawing\MXD\A\PC\Construction\PlanReport\160960738_Fig2_SocioEconomicFeatures_20120902.mxd
 Revised: 2012-08-02 By: p.worsell



Notes
 1. Coordinate System: NAD 1983 UTM Zone 17N
 2. Base features produced under license with the Ontario Ministry of Natural Resources © Queen's Printer for Ontario, 2012; © Townships of Ashfield-Colborne-Wawanosh, 2012. Project Layout: WFL194.
 3. Orthographic imagery provided by © First Base Solutions, 2012. Imagery taken in Spring 2006.

August 2012
 160960738



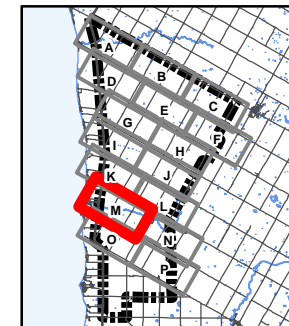
Legend

- 300m Study Area
- 120m Zone of Investigation
- Proposed Project Components**
- Turbine Location
- Turbine Blade Sweep Area
- Met Tower
- Access Road
- Alternate Access Road
- Buildable Area
- Crane Path
- Met Tower Cabling
- Transmission Line
- Transmission Line (Alternate)
- Collector Line System
- Substation/Transformer Station Property
- Participating Property
- Property Line/Road Setback
- Existing Features**
- Expressway / Highway
- Road

- Elevation Contour (metres ASL)
- Hydro Line
- Pipeline
- Watercourse
- Waterbody
- Property Boundary
- Existing Turbine Location
- Cemetery
- Landfill - Active
- Landfill - Closed
- Petroleum Well
- School
- Water Well
- Land Use Designations**
- Agriculture
- Extractive
- Lakeshore Residential
- Natural Environment
- Recreation
- Residential Park
- Village/Hamlet

- Aggregate Resources**
- Aggregate Site - Active
- Aggregate Site - Revoked/Surrendered
- Sterilized Deposit
- Primary Aggregate
- Secondary Aggregate

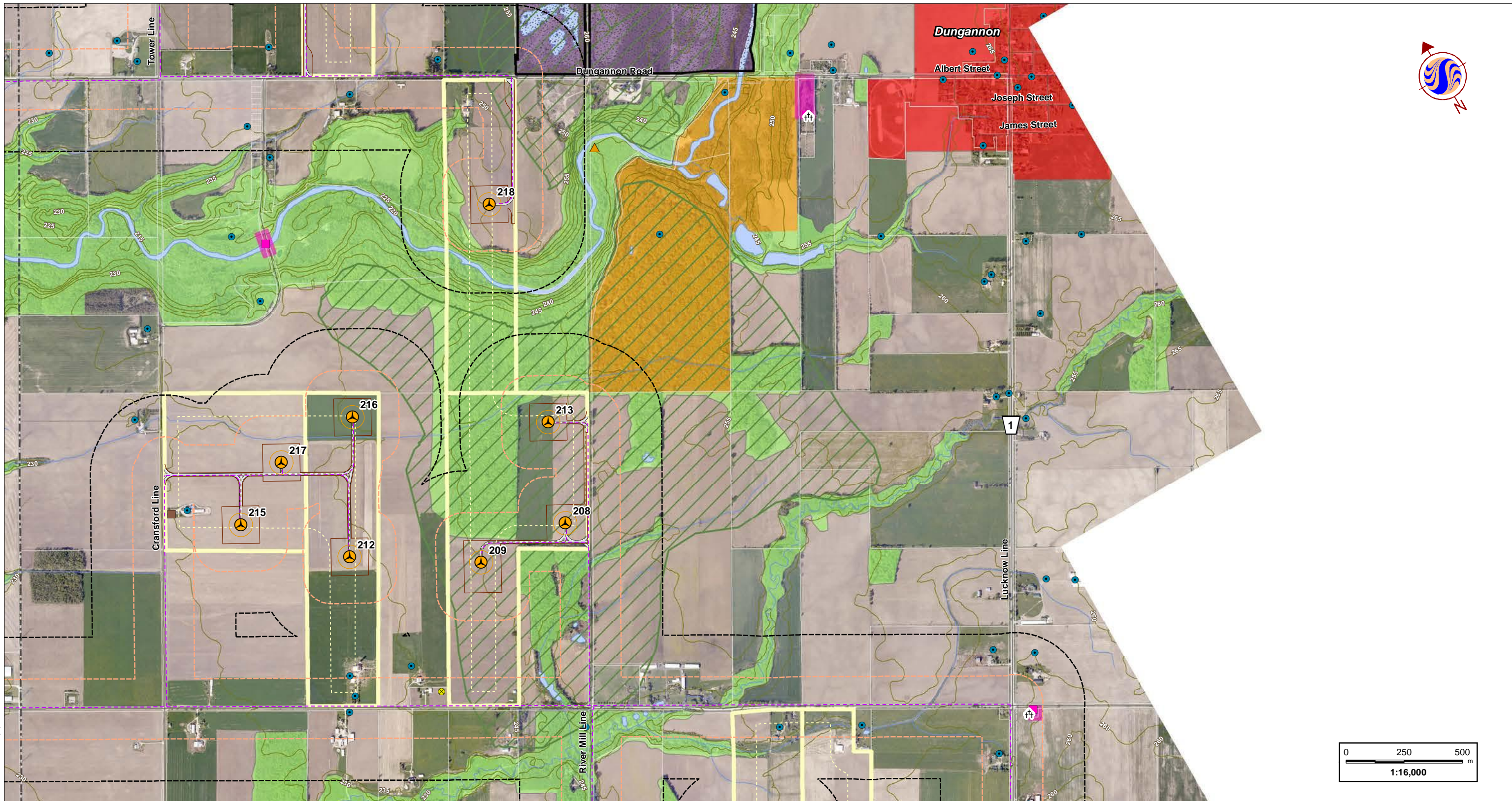
- Cultural Heritage Features**
- Barn
- Church
- Commercial
- House
- Landscape
- School
- Landscape Area



Client/Project
 K2 Wind Ontario Limited Partnership
 K2 Wind Power Project

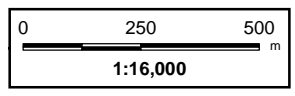
Figure No.
2-M **DRAFT**

Title
Socio-Economic Features



W:\active\60960738\drawing\MXD\PC\ConstructionPlan\Report\160960738_Fig2_SocioEconomicFeatures_20120902.mxd
 Revised: 2012-08-02 By: p.worsell

Notes
 1. Coordinate System: NAD 1983 UTM Zone 17N
 2. Base features produced under license with the Ontario Ministry of Natural Resources © Queen's Printer for Ontario, 2012; © Townships of Ashfield-Colborne-Wawanosh, 2012. Project Layout: WFL194.
 3. Orthographic imagery provided by © First Base Solutions, 2012. Imagery taken in Spring 2006.

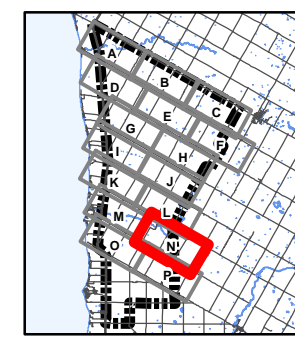


August 2012
160960738

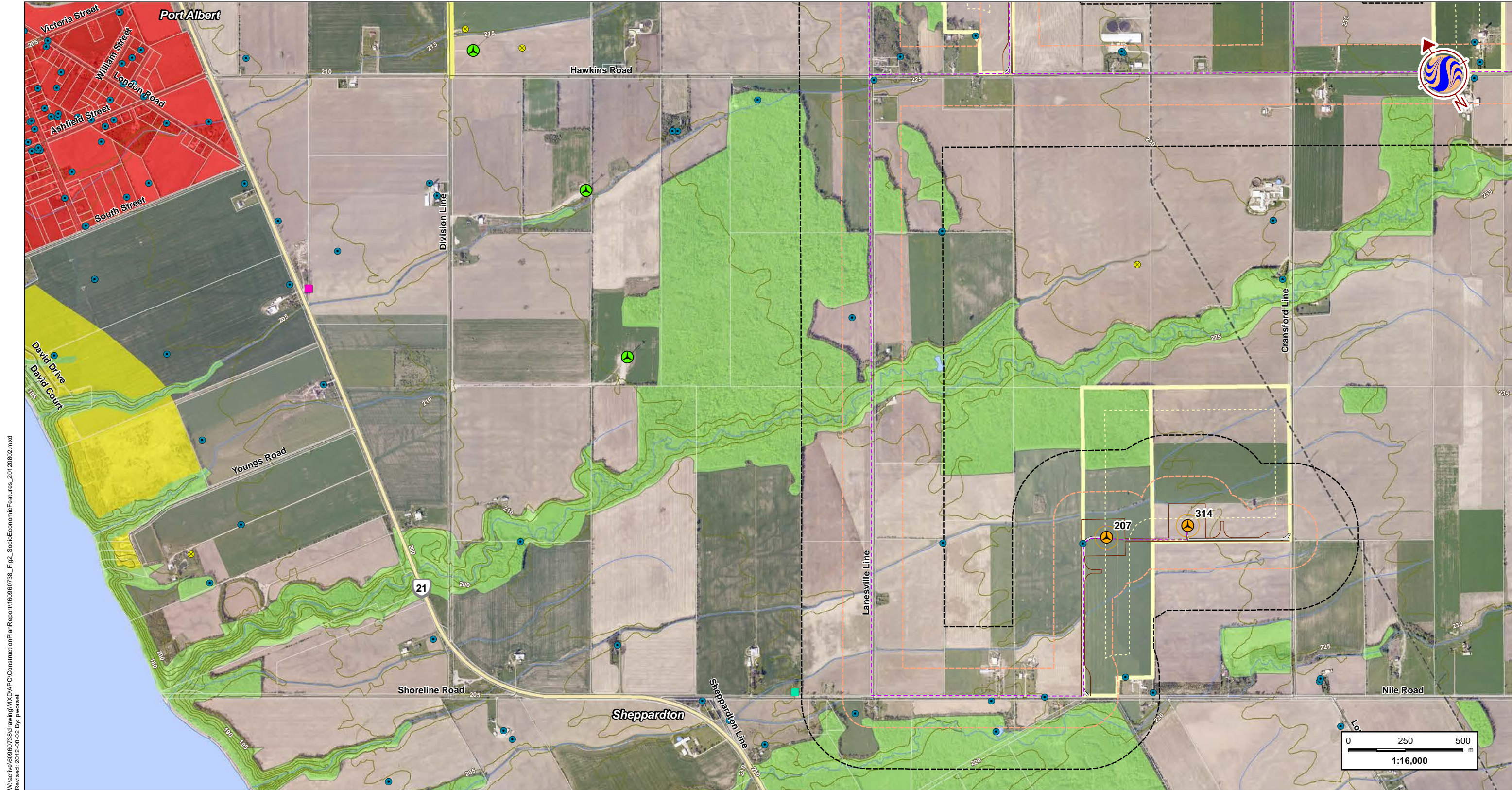


Legend

- | | | | |
|--|--|--|---|
| <ul style="list-style-type: none"> 300m Study Area 120m Zone of Investigation Proposed Project Components Turbine Location Turbine Blade Sweep Area Met Tower Access Road Alternate Access Road Buildable Area Crane Path Met Tower Cabling Transmission Line Transmission Line (Alternate) Collector Line System Substation/Transformer Station Property Participating Property Property Line/Road Setback Existing Features Expressway / Highway Road Elevation Contour (metres ASL) Hydro Line Pipeline Watercourse Waterbody Property Boundary Existing Turbine Location Cemetery Landfill - Active Landfill - Closed Petroleum Well School Water Well | <ul style="list-style-type: none"> Agriculture Extractive Lakeshore Residential Natural Environment Recreation Residential Park Village/Hamlet | <ul style="list-style-type: none"> Aggregate Site - Active Aggregate Site - Revoked/Surrendered Sterilized Deposit Primary Aggregate Secondary Aggregate | <ul style="list-style-type: none"> Barn Church Commercial House Landscape School Landscape Area |
|--|--|--|---|



Client/Project
 K2 Wind Ontario Limited Partnership
 K2 Wind Power Project
 Figure No.
2-N **DRAFT**
 Title
Socio-Economic Features



W:\active\60960738\drawing\MXD\PC\ConstructionPlanReport\160960738_Fig2_SocioEconomicFeatures_20120902.mxd
 Revised: 2012-08-02 By: p.worsell

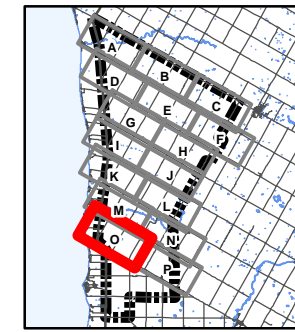
Notes
 1. Coordinate System: NAD 1983 UTM Zone 17N
 2. Base features produced under license with the Ontario Ministry of Natural Resources © Queen's Printer for Ontario, 2012; © Townships of Ashfield-Colborne-Wawanosh, 2012. Project Layout: WFL194.
 3. Orthographic imagery provided by © First Base Solutions, 2012. Imagery taken in Spring 2006.

August 2012
160960738

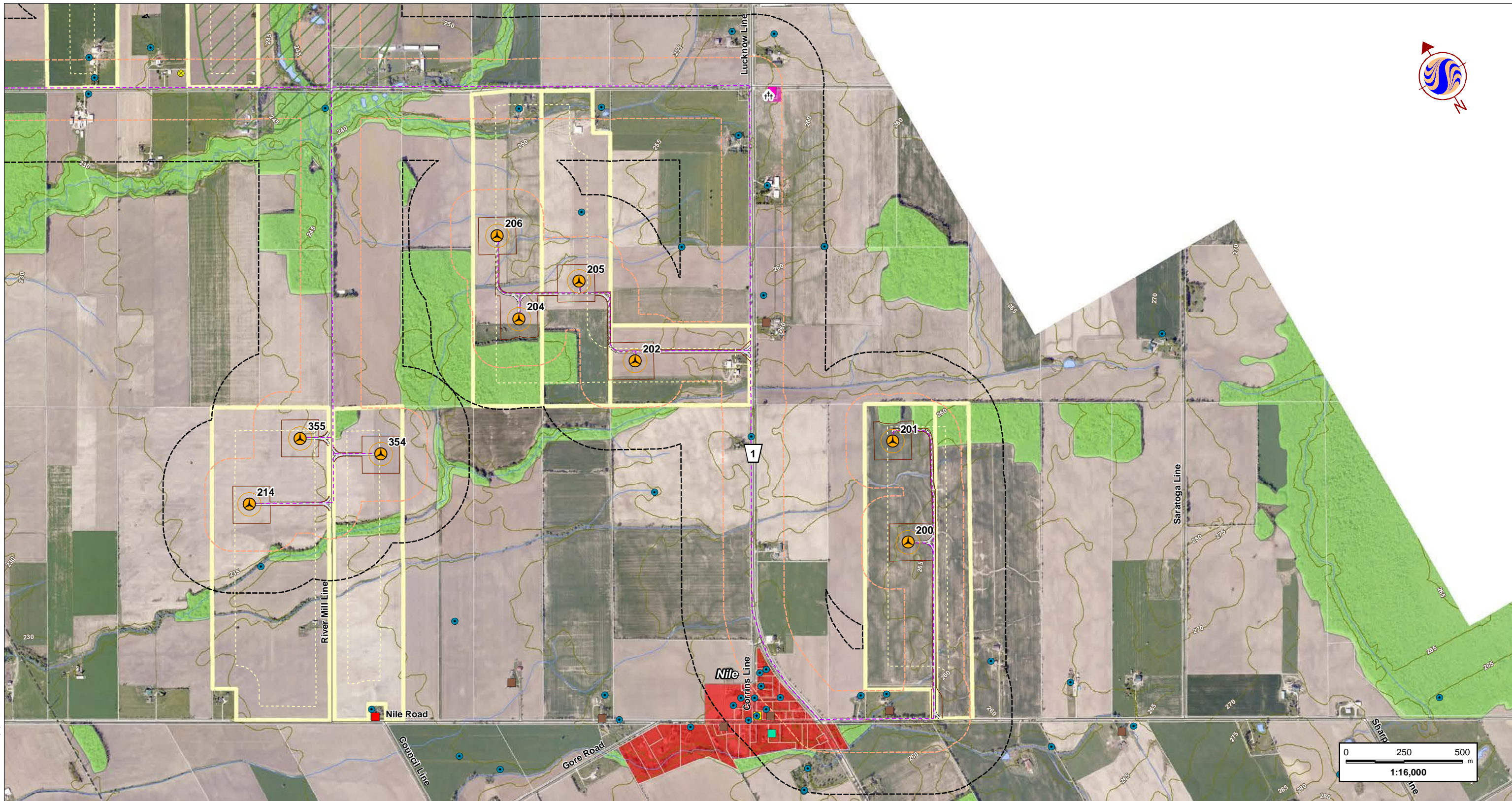
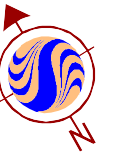


Legend

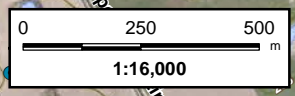
- | |
|--|
| <ul style="list-style-type: none"> 300m Study Area 120m Zone of Investigation Proposed Project Components ● Turbine Location Turbine Blade Sweep Area ● Met Tower Access Road Alternate Access Road Buildable Area Crane Path Met Tower Cabling Transmission Line Transmission Line (Alternate) Collector Line System Substation/Transformer Station Property Participating Property Property Line/Road Setback Existing Features Expressway / Highway Road Elevation Contour (metres ASL) Hydro Line Pipeline Watercourse Waterbody Property Boundary ● Existing Turbine Location † Cemetery ▲ Landfill - Active ▲ Landfill - Closed ● Petroleum Well ● School ● Water Well Land Use Designations Agriculture Extractive Lakeshore Residential Natural Environment Recreation Residential Park Village/Hamlet Aggregate Resources Aggregate Site - Active Aggregate Site - Revoked/Surrendered Sterilized Deposit Primary Aggregate Secondary Aggregate Cultural Heritage Features Barn Church Commercial House Landscape School Landscape Area |
|--|



Client/Project
 K2 Wind Ontario Limited Partnership
 K2 Wind Power Project
 Figure No.
2-0 **DRAFT**
 Title
Socio-Economic Features



W:\active\60960738\drawing\MXD\PC\ConstructionPlanReport\160960738_Fig2_SocioEconomicFeatures_20120902.mxd
 Revised: 2012-08-02 By: p.worsell



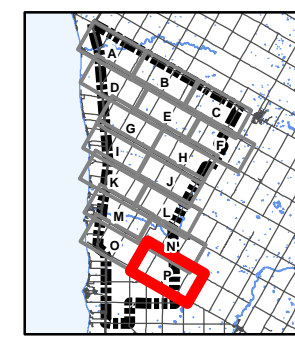
Notes
 1. Coordinate System: NAD 1983 UTM Zone 17N
 2. Base features produced under license with the Ontario Ministry of Natural Resources © Queen's Printer for Ontario, 2012; © Townships of Ashfield-Colborne-Wawanosh, 2012. Project Layout: WFL194.
 3. Orthographic imagery provided by © First Base Solutions, 2012. Imagery taken in Spring 2006.

August 2012
 160960738



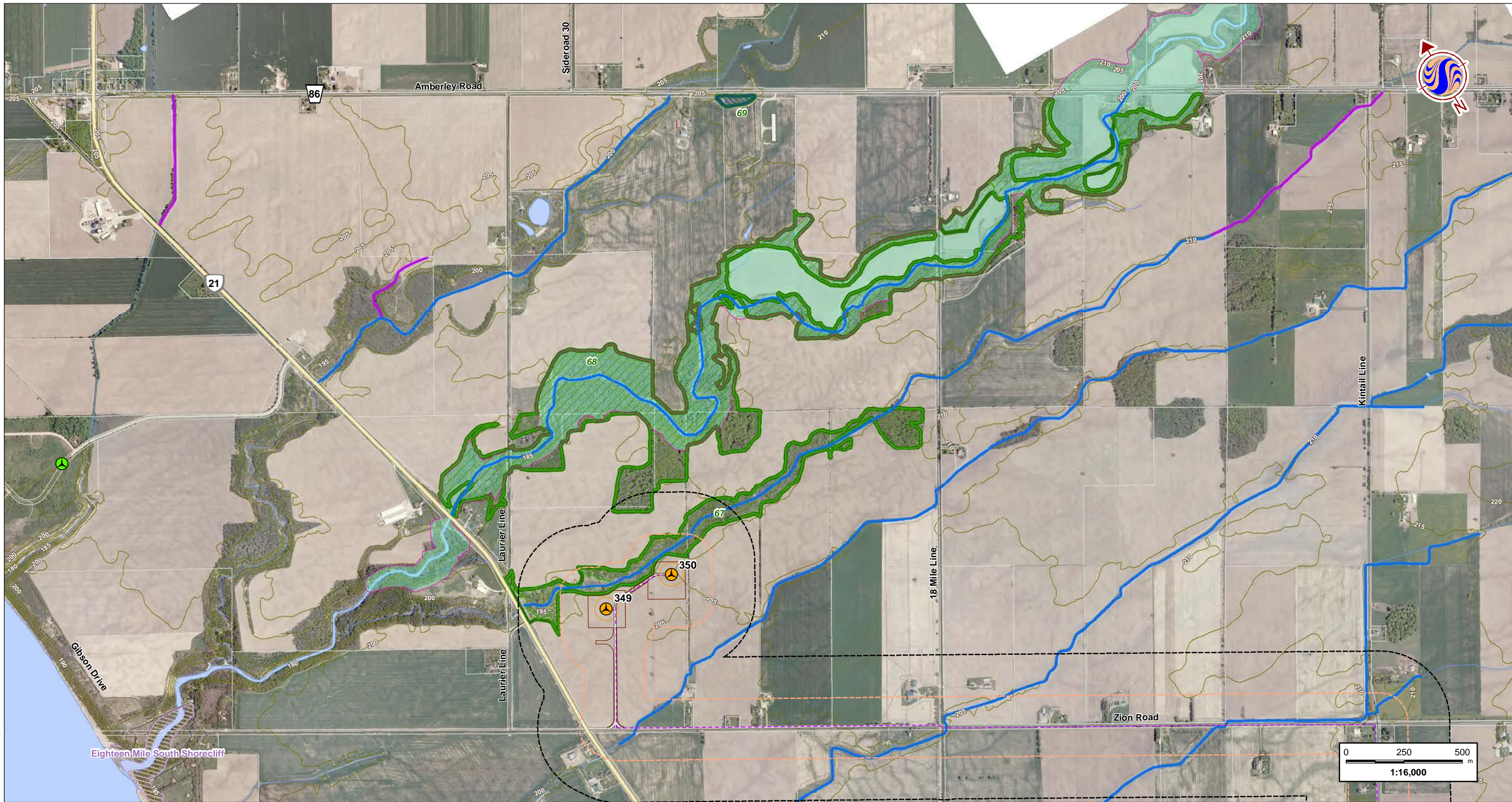
Legend

- | |
|--|
| <ul style="list-style-type: none"> 300m Study Area 120m Zone of Investigation Proposed Project Components ● Turbine Location Turbine Blade Sweep Area ● Met Tower Access Road Alternate Access Road Buildable Area Crane Path Met Tower Cabling Transmission Line Transmission Line (Alternate) Collector Line System Substation/Transformer Station Property Participating Property Property Line/Road Setback Existing Features Expressway / Highway Road Elevation Contour (metres ASL) Hydro Line Pipeline Watercourse Waterbody Property Boundary ● Existing Turbine Location ▲ Landfill - Active ▲ Landfill - Closed ● Petroleum Well ● School ● Water Well Land Use Designations Agriculture Extractive Lakeshore Residential Natural Environment Recreation Residential Park Village/Hamlet Aggregate Resources Aggregate Site - Active Aggregate Site - Revoked/Surrendered Sterilized Deposit Primary Aggregate Secondary Aggregate Cultural Heritage Features Barn Church Commercial House Landscape School Landscape Area |
|--|



Client/Project
 K2 Wind Ontario Limited Partnership
 K2 Wind Power Project
 Figure No.
2-P **DRAFT**
 Title
Socio-Economic Features

W:\active\60960738\drawing\MXD\A\PC\Construction\PlanReport\160960738_Figs_NaturalHeritageFeatures_Waterbodies_20120802.mxd
 Revised: 2012-08-02 By: p.worsell



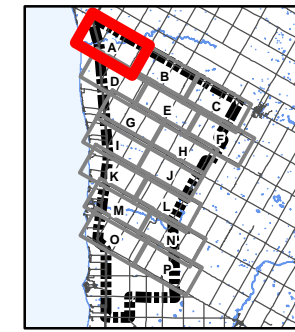
Notes
 1. Coordinate System: NAD 1983 UTM Zone 17N
 2. Base features produced under license with the Ontario Ministry of Natural Resources © Queen's Printer for Ontario, 2012. Project Layout: WFL194.
 3. Orthographic imagery provided by © First Base Solutions, 2012. Imagery taken in Spring 2006.

July 2012
 160960738



Legend

- 300m Study Area
- 120m Zone of Investigation
- Proposed Project Components**
- Turbine Location
- Turbine Blade Sweep Area
- Met Tower
- + Transformer Location
- Access Road
- Alternate Access Road
- Buildable Area
- Crane Path
- Met Tower Cabling
- Transmission Line
- Transmission Line (Alternate)
- Collector Line System
- Substation/Transformer Station Property
- Existing Features**
- Expressway / Highway
- Road
- Elevation Contour (metres ASL)
- Hydro Line
- Watercourse
- Waterbody
- Property Boundary
- Existing Turbine Location
- Water Body Classification**
- Permanent
- Intermittent
- Significant Natural Features**
- Significant Amphibian Woodland Breeding Habitat
- Significant Amphibian Corridor
- Natural Feature
- Significant Wetland
- Significant Woodland
- Significant Bat Maternal Colony Roost Habitat
- Significant Colonial Bird Nesting Habitat (Herons)
- Significant Amphibian Woodland Breeding Habitat
- Significant Habitat for Species of Conservation Concern (Snapping Turtle)
- Significant Valleyland
- Significant Waterfowl Nesting Habitat
- Significant Raptor Feeding & Roosting Habitat
- Significant Turtle Nesting Habitat
- Significant Turtle Over-wintering Habitat
- Provincially Significant Earth Science ANSI
- Provincially Significant Life Science ANSI



Client/Project
 K2 Wind Ontario Limited Partnership
 K2 Wind Power Project

Figure No.
3-A **DRAFT**

Title
Natural Heritage Features & Water Bodies